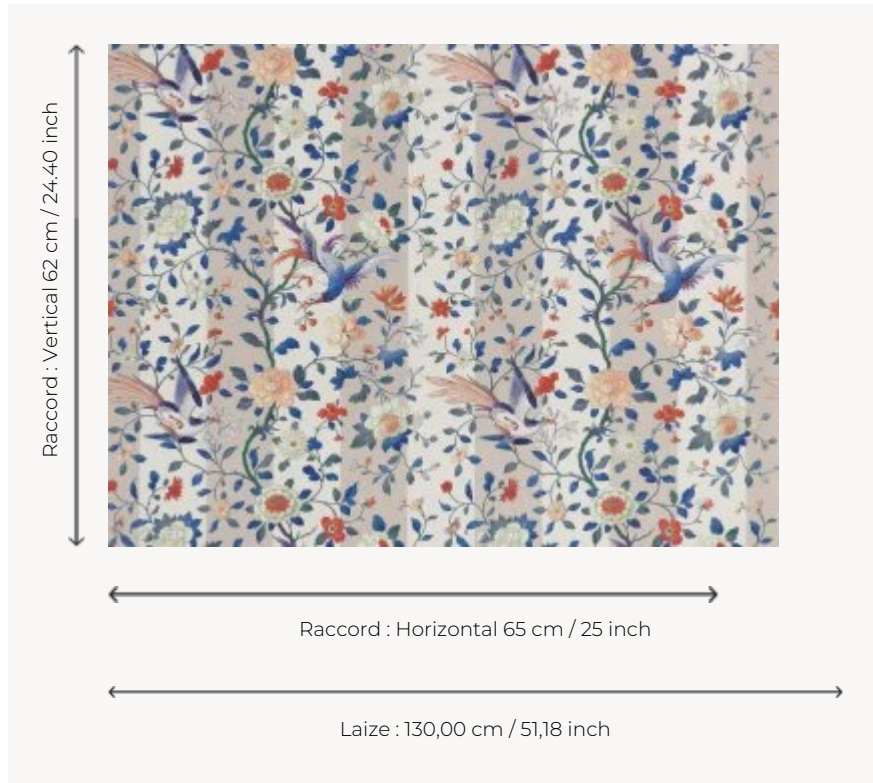


BP332003 KONOTORI

KONOTORI reflects a late 19th-century Japanese motif preserved in the archives of la Maison Pierre Frey. Printed wallpaper on silk SHIVA BP334. Matching fabric B7617.

BP332003 - Bleu



Braquenié

| | |
|-------------------------|---|
| TYPE | Wide width printed wallpapers - Paperbacked fabrics |
| SALES UNIT | Available per meter/yard |
| BACKING | NON WOVEN |
| COMPOSITION | 100 % Silk |
| WIDTH | 130 cm / 51,18 inch |
| REPEAT | H: 65 cm - 25,00 inch V: 62 cm - 24,40 inch Straight repeat |
| WEIGHT | 194 gr / m ² |
| CARE |  |
| TRIMMING | Trimmed |
| HANGING/REMOVING | Paste the wall Strippable |
| CERTIFICATIONS | EUROCLASS B-s1,d0 ASTM E84 Class A |
| INFORMATION | Panel effect Inherent irregularities from the natural fiber |
| BOOK | B9979PPBRAQ5 |

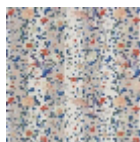
3 Colors



BP332001
Rose



BP332002
Vert



BP332003
Bleu