

BP334005 SHIVA

Plain raw silk in 13 colors that are reminiscent of the opulence and shimmering hues of Second Empire court robes. These silks are the perfect marriage between century-old oriental expertise and the Maison's innovative vision.

BP334005 - Gris



Laize : 132,00 cm / 51,96 inch

Braquenié

TYPE	Plains & semi plains - Paperbacked fabrics
SALES UNIT	Available per meter/yard
BACKING	NON WOVEN
COMPOSITION	100 % Silk
WIDTH	132 cm / 51,96 inch
REPEAT	Free match
WEIGHT	194 gr / m ²
CARE	
TRIMMING	Trimmed
HANGING/REMOVING	Paste the wall Strippable
CERTIFICATIONS	EUROCLASS B-s1,d0 ASTM E84 Class A
INFORMATION	Panel effect Inherent irregularities from the natural fiber
BOOK	B9979PPBRAQ7

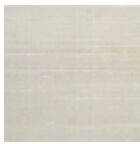
25 Colors



BP334001
Chantilly



BP334002
Crème



BP334003
Beige



BP334004
Lin



BP334005
Gris



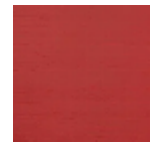
BP334006
Ciel



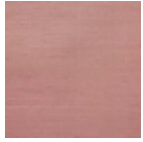
BP334007
Bleu



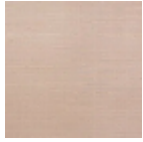
BP334008
Émeraude



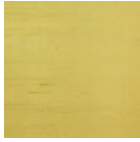
BP334009
Rouge



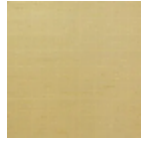
BP334010
Corail



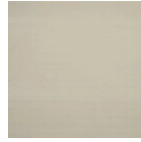
BP334011
Pétale



BP334012
Jaune



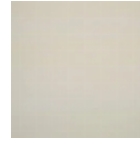
BP334013
Or



BP334014
Craie



BP334015
Chanvre



BP334017
Nuage



BP334018
Source



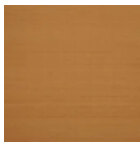
BP334019
Saugé



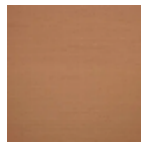
BP334020
Citronnade



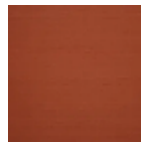
BP334021
Blond



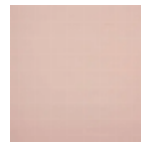
BP334022
Cassonade



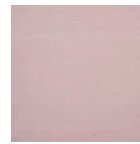
BP334023
Biche



BP334025
Roussillon



BP334026
Poudre



BP334027
Ballerine