

## BP334022 SHIVA

Plain raw silk in 13 colors that are reminiscent of the opulence and shimmering hues of Second Empire court robes. These silks are the perfect marriage between century-old oriental expertise and the Maison's innovative vision.

### BP334022 - Cassonade



← Laize : 132,00 cm / 51,96 inch →

### Braquenié

<b>TYPE</b>	Plains & semi plains - Paperbacked fabrics
<b>SALES UNIT</b>	Available per meter/yard
<b>BACKING</b>	NON WOVEN
<b>COMPOSITION</b>	100 % Silk
<b>WIDTH</b>	132 cm / 51,96 inch
<b>REPEAT</b>	Free match
<b>WEIGHT</b>	194 gr / m <sup>2</sup>
<b>CARE</b>	 
<b>TRIMMING</b>	Trimmed
<b>HANGING/REMOVING</b>	Paste the wall Strippable
<b>CERTIFICATIONS</b>	EUROCLASS B-s1,d0 ASTM E84 Class A
<b>INFORMATION</b>	Panel effect Inherent irregularities from the natural fiber
<b>BOOK</b>	B9979PPBRAQ7

## 25 Colors



BP334001  
Chantilly



BP334002  
Crème



BP334003  
Beige



BP334004  
Lin



BP334005  
Gris



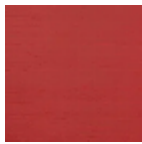
BP334006  
Ciel



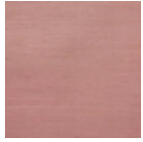
BP334007  
Bleu



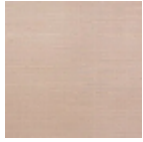
BP334008  
Emeraude



BP334009  
Rouge



BP334010  
Corail



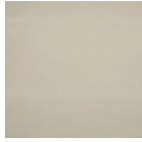
BP334011  
Pétale



BP334012  
Jaune



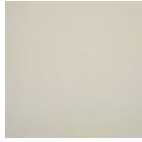
BP334013  
Or



BP334014  
Craie



BP334015  
Chanvre



BP334017  
Nuage



BP334018  
Source



BP334019  
Saugé



BP334020  
Citronnade



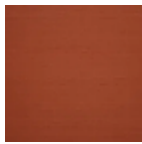
BP334021  
Blond



BP334022  
Cassonade



BP334023  
Biche



BP334025  
Roussillon



BP334026  
Poudre



BP334027  
Ballerine