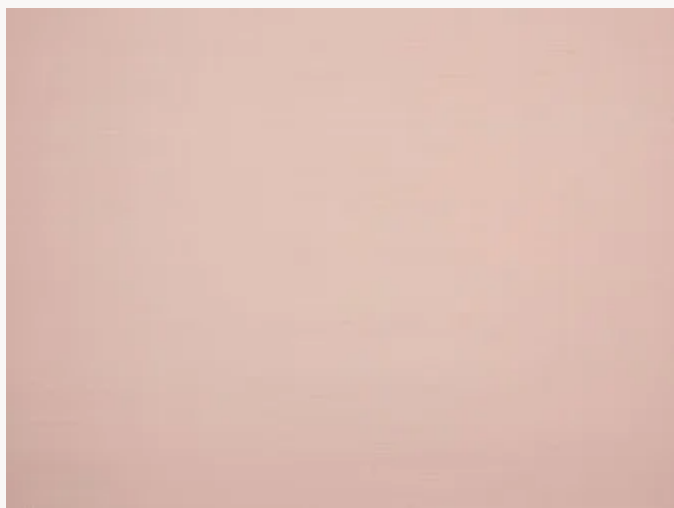


## BP334026 SHIVA

Plain raw silk in 13 colors that are reminiscent of the opulence and shimmering hues of Second Empire court robes. These silks are the perfect marriage between century-old oriental expertise and the Maison's innovative vision.

### BP334026 - Poudre

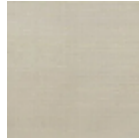
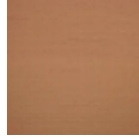


Laize : 132,00 cm / 51,96 inch

### Braquenié

<b>TYPE</b>	Plains & semi plains - Paperbacked fabrics
<b>SALES UNIT</b>	Available per meter/yard
<b>BACKING</b>	NON WOVEN
<b>COMPOSITION</b>	100 % Silk
<b>WIDTH</b>	132 cm / 51,96 inch
<b>REPEAT</b>	Free match
<b>WEIGHT</b>	194 gr / m <sup>2</sup>
<b>CARE</b>	
<b>TRIMMING</b>	Trimmed
<b>HANGING/REMOVING</b>	Paste the wall Strippable
<b>CERTIFICATIONS</b>	EUROCLASS B-s1,d0 ASTM E84 Class A
<b>INFORMATION</b>	Panel effect Inherent irregularities from the natural fiber
<b>BOOK</b>	B9979PPBRAQ7

## 25 Colors

								
BP334001 Chantilly	BP334002 Crème	BP334003 Beige	BP334004 Lin	BP334005 Gris	BP334006 Ciel	BP334007 Bleu	BP334008 Emeraude	BP334009 Rouge
								
BP334010 Corail	BP334011 Pétale	BP334012 Jaune	BP334013 Or	BP334014 Craie	BP334015 Chanvre	BP334017 Nuage	BP334018 Source	BP334019 Sauge
								
BP334020 Citronnade	BP334021 Blond	BP334022 Cassonade	BP334023 Biche	BP334025 Roussillon	BP334026 Poudre	BP334027 Ballerine		