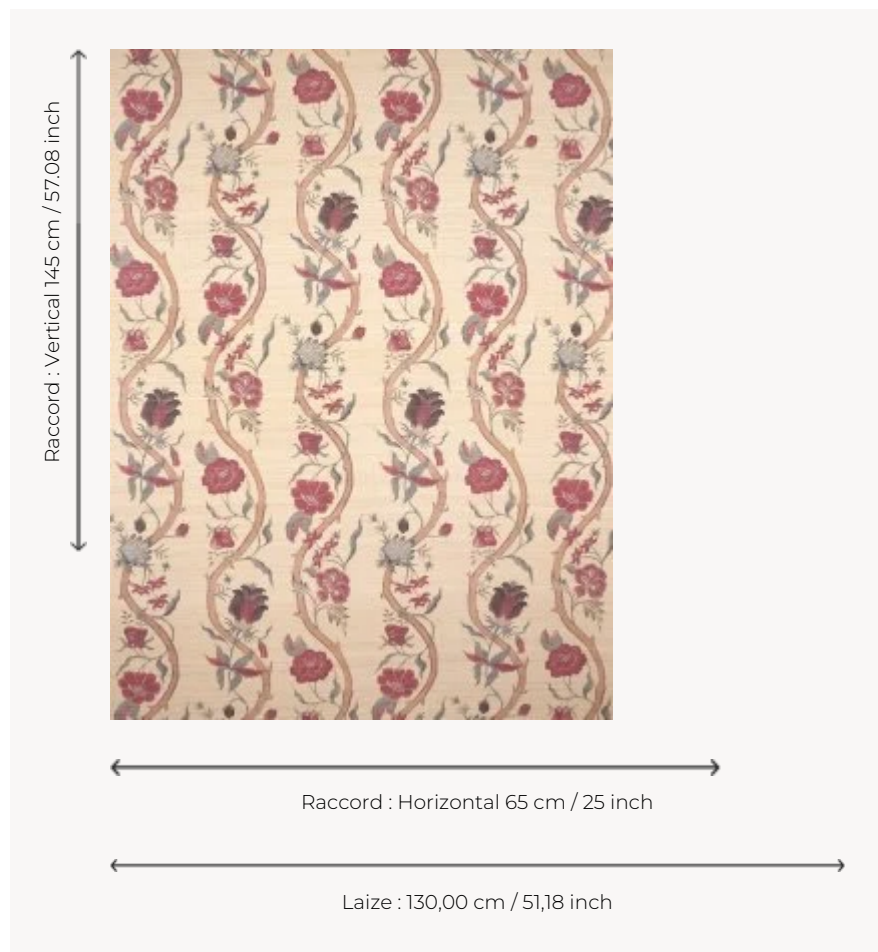



BP346002 INDIRA

The original document, preserved in the Maison's archives, is a canvas painted and printed in India in the 18th century. It presents a fantastical flowery design that probably served as a border for a palempore. The printing on silk with natural reflections allows to retranscribe all the authenticity of the archive adapted here in the form of stripes. Coordinated with ALBERTINE F3278 and FP640.

BP346002 - Sable



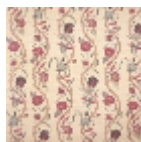
Braquenié

TYPE	Wide width printed wallpapers - Paperbacked fabrics
SALES UNIT	Available per meter/yard
BACKING	NON WOVEN
COMPOSITION	100 % Silk
WIDTH	130 cm / 51,18 inch
REPEAT	H: 65 cm - 25,00 inch V: 145 cm - 57,08 inch Straight repeat
WEIGHT	325 gr / m ²
CARE	
TRIMMING	Trimmed
HANGING/REMOVING	Paste the wall Strippable
CERTIFICATIONS	EUROCLASS C-s1,d0 ASTM E84 Class A
NOTES	Flame retardant backing
INFORMATION	Panel effect Inherent irregularities from the natural fiber
BOOK	B9979PPBRAQ9

2 Colors



BP346001
Creme



BP346002
Sable