


## BP349002 PARVATI

Inspired by an 18th century screen covered with a wallpaper, this magnificent embroidery on linen displays a decoration of branches and birds in subtle and luminous colors. Wallpaper laminated on non-woven backing. Coordinated with PARVATI B7684 fabric.

### BP349002 - Menthe



### Braquenié

<b>TYPE</b>	Embossed patterns - Paperbacked fabrics - Embroideries
<b>SALES UNIT</b>	Available per meter/yard
<b>BACKING</b>	PAPER
<b>COMPOSITION</b>	63 % Linen - 26 % Viscose - 11 % Polyester
<b>WIDTH</b>	129 cm / 50,78 inch
<b>REPEAT</b>	H: 129 cm - 50,00 inch V: 117 cm - 46,06 inch Straight repeat
<b>WEIGHT</b>	455 gr / m <sup>2</sup>
<b>CARE</b>	
<b>TRIMMING</b>	Trimmed
<b>HANGING/REMOVING</b>	Paste the paper Wet removable
<b>CERTIFICATIONS</b>	ASTM E84 Class A
<b>INFORMATION</b>	Panel effect Embroidered wallcovering. Irregular appearance due to handcrafting
<b>BOOK</b>	B9979PPBRAQ9

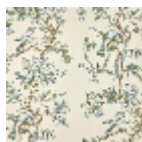
## 3 Colors



BP349001  
Fruits rouges



BP349002  
Menthe



BP349003  
Prairie