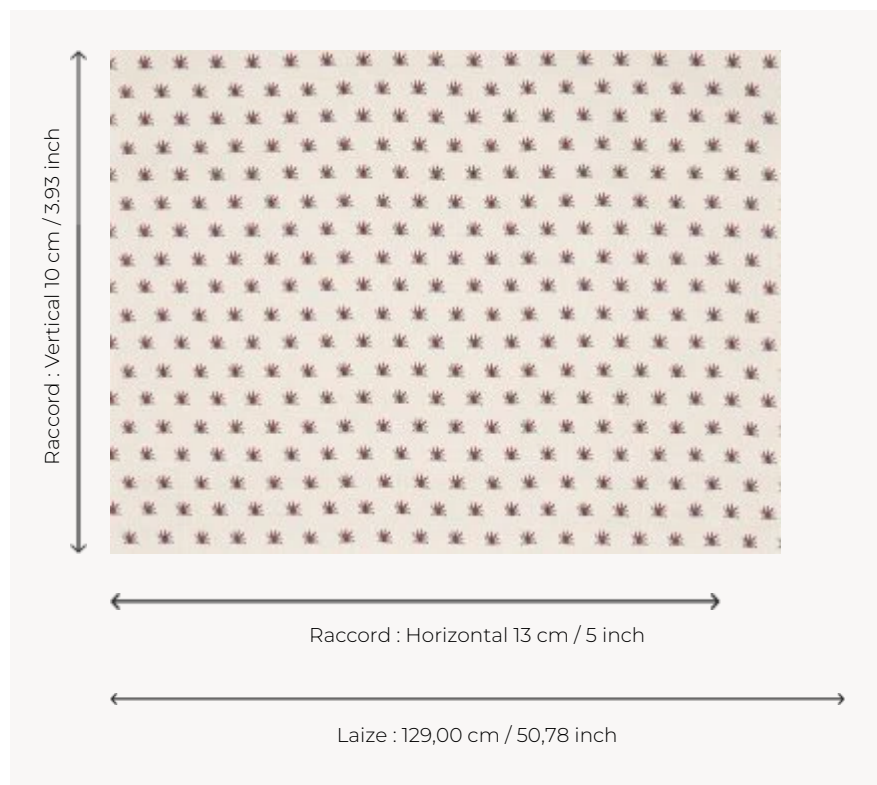



BP352001 COULONGES SEMIS

This embroidery is a reinterpretation of a canvas printed with the block printing technique in France in the last quarter of the 18th century. Inspired by indiennes, the original document is kept in the Maison's archives. This delicate sowing of exotic plants is finely embroidered on a magnificent linen satin and laminated on non-woven fabric. Coordinated with the fabrics COULONGES B7659 and COULONGES CONTREFOND B7660.

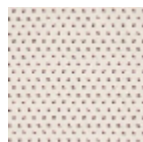
BP352001 - Hortensia



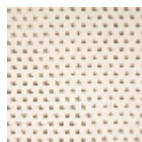
Braquenié

TYPE	Embossed patterns - Paperbacked fabrics - Embroideries
SALES UNIT	Available per meter/yard
BACKING	PAPER
COMPOSITION	80 % Linen - 14 % Viscose - 6 % Polyester
WIDTH	129 cm / 50,78 inch
REPEAT	H: 13 cm - 5,00 inch V: 10 cm - 3,93 inch Straight repeat
WEIGHT	383 gr / m ²
CARE	
TRIMMING	Trimmed
HANGING/REMOVING	Paste the paper Wet removable
CERTIFICATIONS	ASTM E84 Class A
INFORMATION	Panel effect Embroidered wallcovering. Irregular appearance due to handcrafting
BOOK	B9979PPBRAQ9

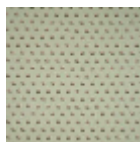
3 Colors



BP352001
Hortensia



BP352002
Mandarine



BP352003
Amande