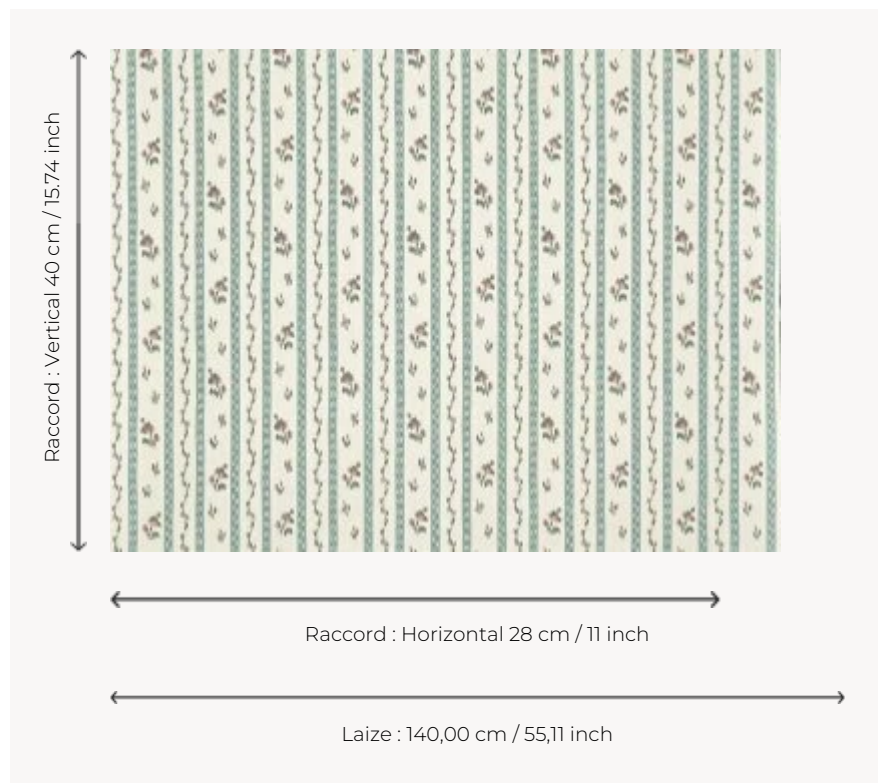


BP353003 THERESE

This model features a design inspired by the mottled branches fashionable under Louis XVI. This charming floral stripe reproduces, using the same technique, a warp print from the 19th century, preserved in the Maison's archives. The warp is printed before being woven.

BP353003 - Jardin



Braquenié

TYPE	Wide width printed wallpapers - Paperbacked fabrics
SALES UNIT	Available per meter/yard
BACKING	NON WOVEN
COMPOSITION	70 % Cotton - 30 % Polyester
WIDTH	140 cm / 55,11 inch
REPEAT	H: 28 cm - 11,00 inch V: 40 cm - 15,74 inch Straight repeat
WEIGHT	330 gr / m ²
CARE	
TRIMMING	Trimmed
HANGING/REMOVING	Paste the wall Strippable
CERTIFICATIONS	ASTM E84 Class A
INFORMATION	Panel effect
BOOK	B9979PPBRAQ9

4 Colors



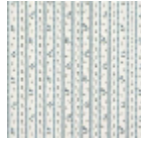
BP353001
Caramel



BP353002
Citron



BP353003
Jardin



BP353004
Bleuet