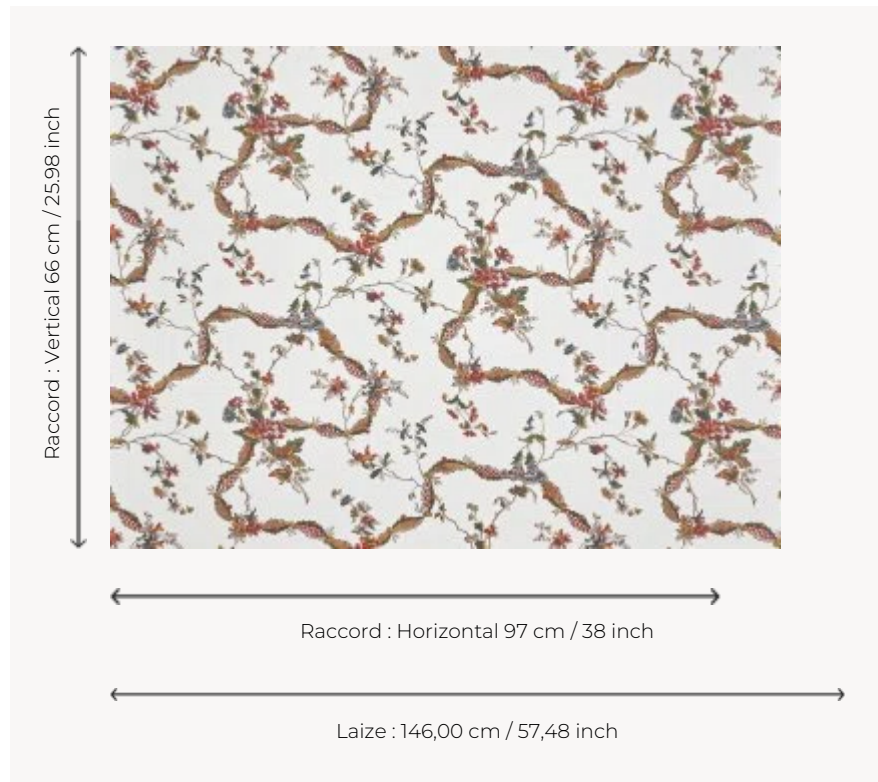



## BP355001 MIRANDE

This wallpaper, decorated with ribbons delicately intertwined with flowers, is a reinterpretation of a canvas printed with the block printing technique around 1789 by the Woolmer Collins factory in England, preserved in the Maison archives. It is printed on a lightly satin-finished non-woven backing.

### BP355001 - Fragrance



### Braquenié

<b>TYPE</b>	Wide width printed wallpapers
<b>SALES UNIT</b>	Available per meter/yard
<b>BACKING</b>	NON WOVEN
<b>COMPOSITION</b>	-
<b>WIDTH</b>	146 cm / 57,48 inch
<b>REPEAT</b>	H: 97 cm - 38,00 inch V: 66 cm - 25,98 inch Half drop repeat
<b>WEIGHT</b>	160 gr / m <sup>2</sup>
<b>CARE</b>	
<b>TRIMMING</b>	Pretrimmed
<b>HANGING/REMOVING</b>	Paste the wall Wet removable
<b>CERTIFICATIONS</b>	EUROCLASS C-s1,d0 ASTM E84 Class A
<b>NOTES</b>	Good lightfastness Flame retardant backing
<b>INFORMATION</b>	Use the trim & join marks during installation. Double-cut installation.
<b>BOOK</b>	B9979PPBRAQ9

# 1 Colors



BP355001  
Fragrance