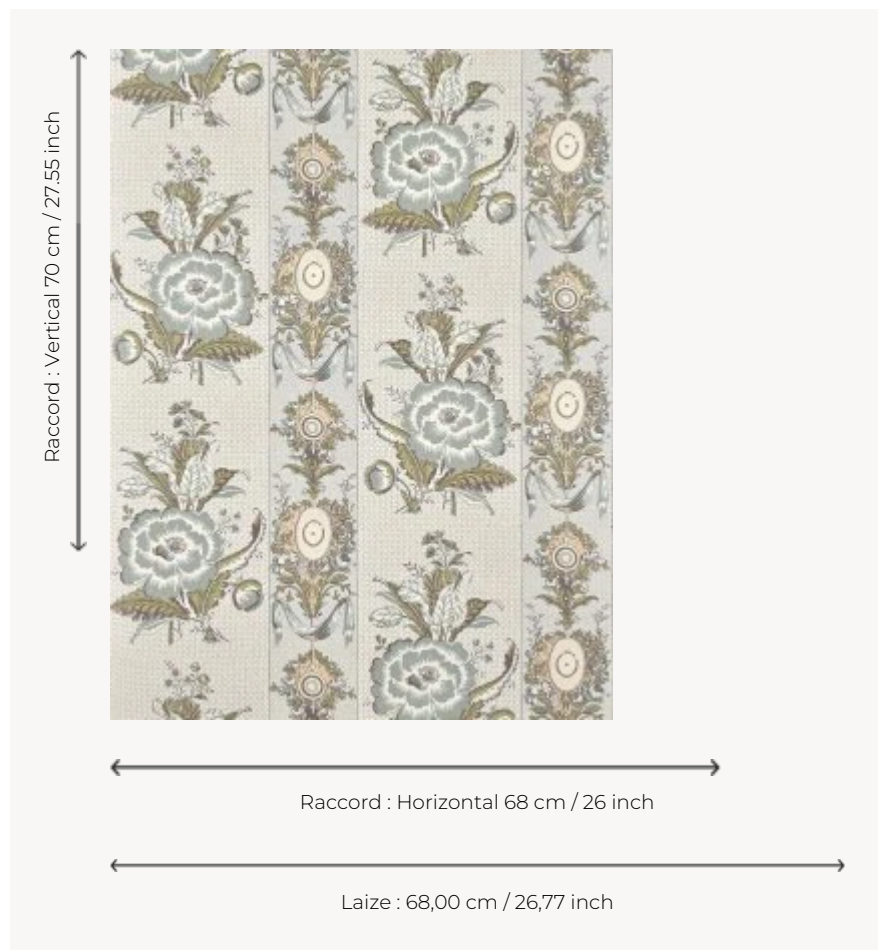




## BP364002 LES RENONCULES

Charming stripe in the decoration of ranunculus and tulips, interspersed with medallions and ribbons and placed on a picoté background. This wallpaper, rotary screen printed, reproduces La souche fleurie, a canvas printed with the block printing technique in Beautiran around 1790 and preserved in the Maison's archives.

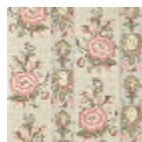
### BP364002 - Bleu tendre



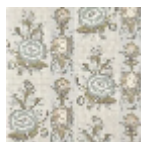
### Braquenié

<b>TYPE</b>	Small width printed wallpapers
<b>SALES UNIT</b>	Available per roll of 10,05 mts
<b>BACKING</b>	NON WOVEN
<b>COMPOSITION</b>	-
<b>WIDTH</b>	68 cm / 26,77 inch
<b>REPEAT</b>	H: 68 cm - 26,00 inch V: 70 cm - 27,55 inch Half drop repeat
<b>WEIGHT</b>	155 gr / m <sup>2</sup>
<b>CARE</b>	 
<b>TRIMMING</b>	Trimmed
<b>HANGING/REMOVING</b>	Paste the wall Strippable
<b>CERTIFICATIONS</b>	EUROCLASS B-s1,d0 ASTM E84 Class A
<b>NOTES</b>	Good lightfastness Flame retardant backing Traditional printing technique
<b>BOOK</b>	B9979PPBRAQ9

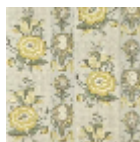
## 3 Colors



BP364001  
Petale



BP364002  
Bleu tendre



BP364003  
Miel