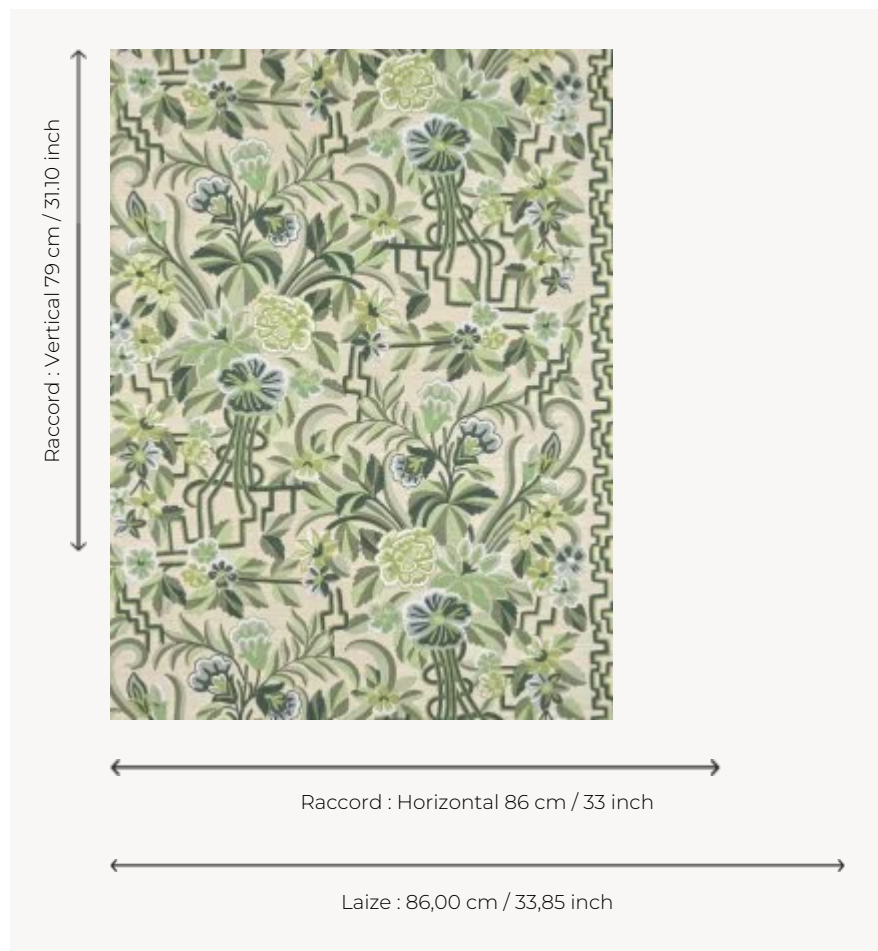



FP043002 HANA

A Japanese name meaning "flower". Embroidered on straw, this Asian-inspired design is full of flowers originally found on a black wool jacket embroidered in chain stitch in India and kept in the House's archives. By juxtaposing the panels, a border of flowers appears, reminiscent of a kakemono.

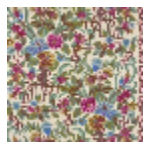
FP043002 - Menthe



Pierre Frey

TYPE	Embossed patterns - Straws and similar materials - Embroideries
SALES UNIT	Available per roll of 7,20 mts
BACKING	PAPER
COMPOSITION	38 % Viscose - 30 % Polyester - 23 % Straw - 9 % Cotton
WIDTH	86 cm / 33,85 inch
REPEAT	H: 86 cm - 33,00 inch V: 79 cm - 31,10 inch Free match
WEIGHT	715 gr / m ²
CARE	
TRIMMING	Trimmed
HANGING/REMOVING	Paste the wall Dry strippable
NOTES	Raised pattern
INFORMATION	Panel effect Embroidered wallcovering. Irregular appearance due to handcrafting
BOOK	F9979PPFREY44

2 Colors



FP043001
Bougainvillier



FP043002
Menthe