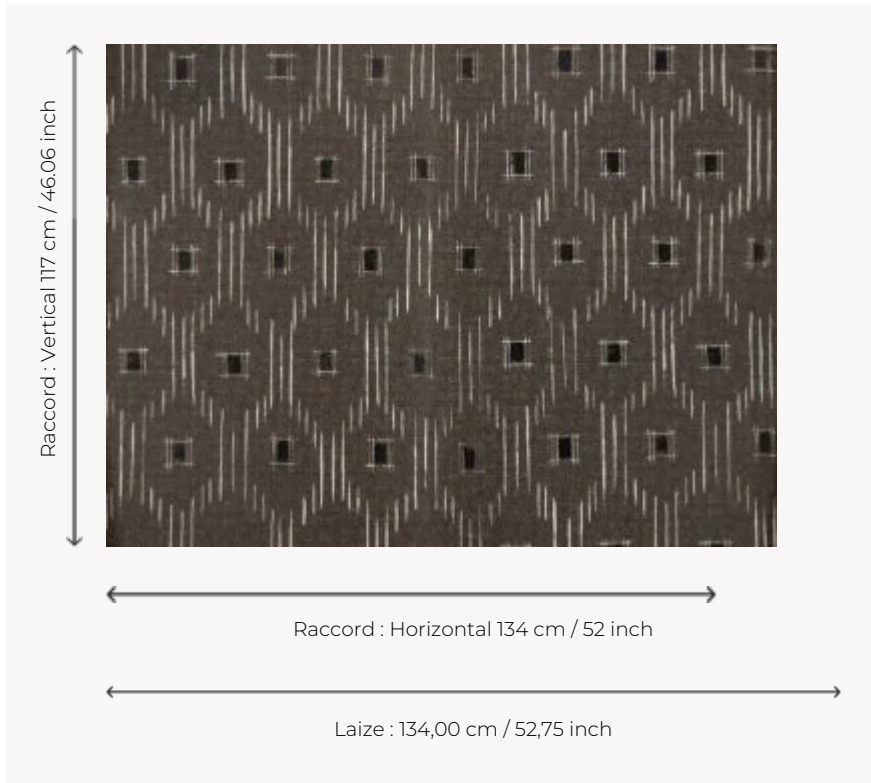



# FP058002 KAORI

A geometric pattern inspired by traditional Japanese textiles, revealed through free brushstrokes.  
KAORI is printed on an embossed vinyl backing that imitates silk.

## FP058002 - Argile



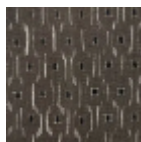
## Pierre Frey

<b>TYPE</b>	Wide width printed wallpapers
<b>SALES UNIT</b>	Available per meter/yard
<b>BACKING</b>	NON WOVEN
<b>COMPOSITION</b>	-
<b>WIDTH</b>	134 cm / 52,75 inch
<b>REPEAT</b>	H: 134 cm - 52,00 inch V: 117 cm - 46,06 inch Straight repeat
<b>WEIGHT</b>	185 gr / m <sup>2</sup>
<b>CARE</b>	
<b>TRIMMING</b>	Pretrimmed
<b>HANGING/REMOVING</b>	Paste the wall Strippable
<b>CERTIFICATIONS</b>	EUROCLASS B-s1,d0 ASTM E84 Class A
<b>INFORMATION</b>	Use the trim & join marks during installation. Double-cut installation.
<b>BOOK</b>	F9979PPFREY44

## 2 Colors



FP058001  
Indigo



FP058002  
Argile