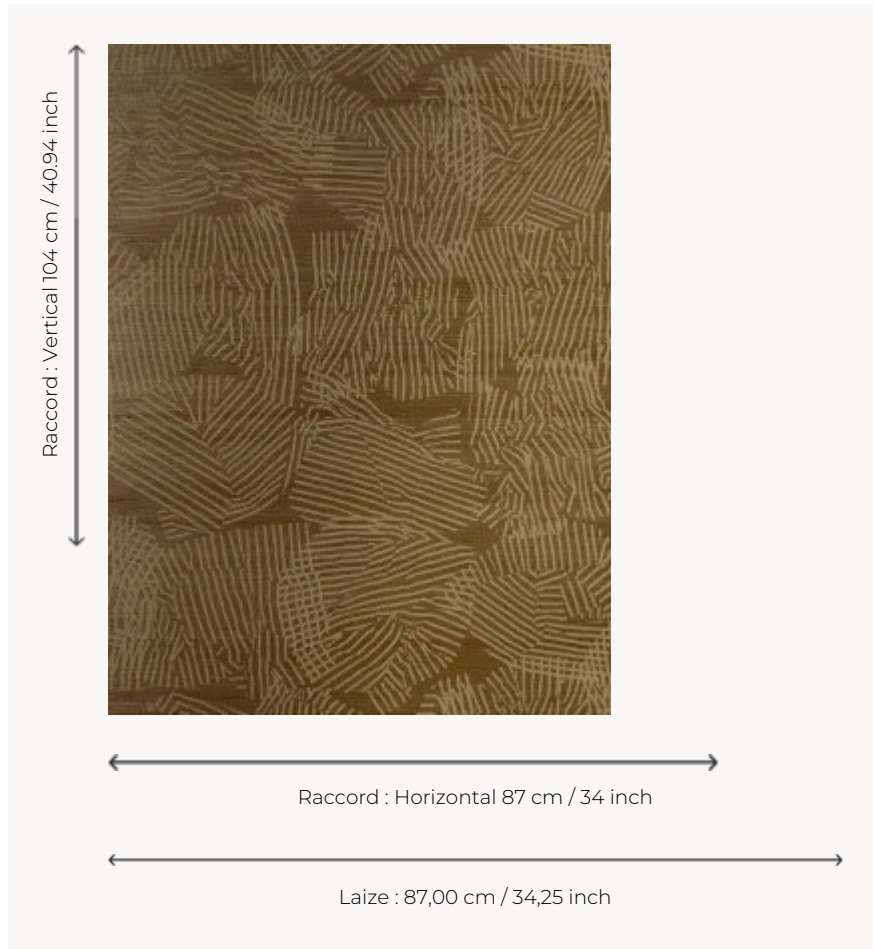


## FP146003 PENINSULE

A graphic design in which stripes meet and intermingle, as if suspended in the air. 3D ink is used on a straw base to create a sandy effect.

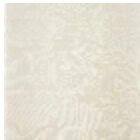
### FP146003 - CORDE



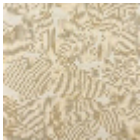
### Pierre Frey

<b>TYPE</b>	Straws and similar materials - Printed wallpapers
<b>SALES UNIT</b>	Available per meter/yard
<b>BACKING</b>	NON WOVEN
<b>COMPOSITION</b>	100 % Straw
<b>WIDTH</b>	87 cm / 34,25 inch
<b>REPEAT</b>	H: 87 cm - 34,00 inch V: 104 cm - 40,94 inch Half drop repeat
<b>WEIGHT</b>	370 gr / m <sup>2</sup>
<b>CARE</b>	
<b>TRIMMING</b>	Trimmed
<b>HANGING/REMOVING</b>	Paste the wall Strippable
<b>INFORMATION</b>	Panel effect Inherent irregularities from the natural fiber
<b>BOOK</b>	F9979PPFREY47

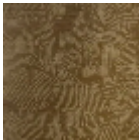
3 Colors



FP146001  
NACRE



FP146002  
JUTE



FP146003  
CORDE