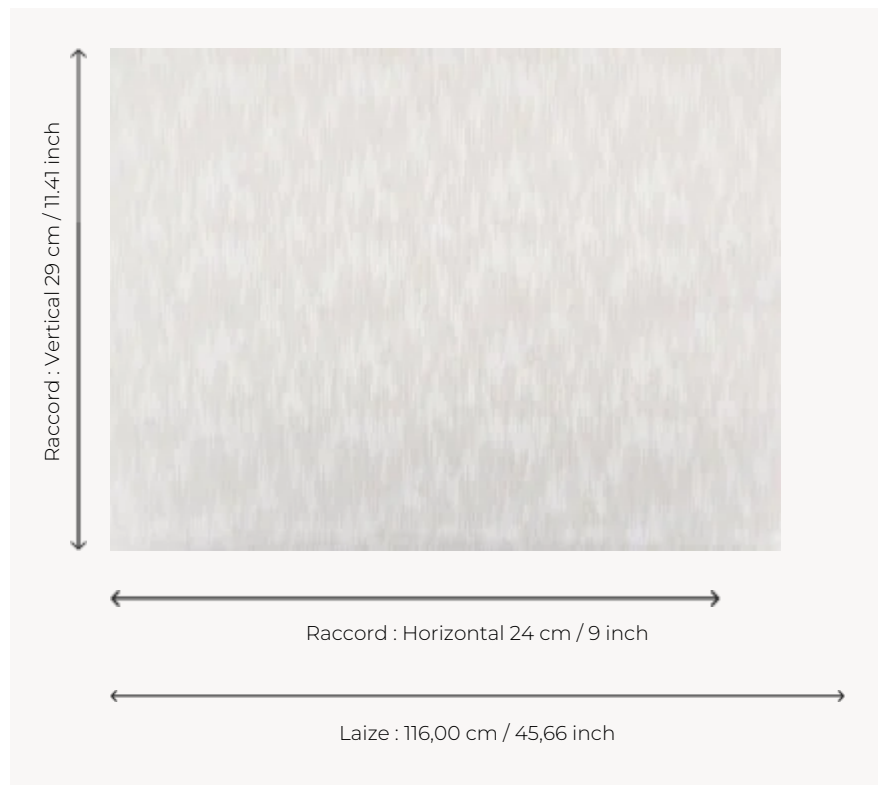


## FP350001 CYMBALE

This textile wallcovering imitates animal skin while evoking the preciousness of a Moire with an alternation between shiny and mat. Trimmed.

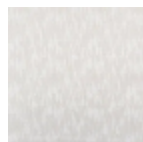
### FP350001 - Nuage



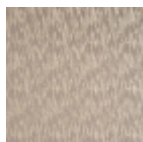
### Pierre Frey

<b>TYPE</b>	Paperbacked fabrics - Straws and similar materials
<b>SALES UNIT</b>	Available per meter/yard
<b>BACKING</b>	NON WOVEN
<b>COMPOSITION</b>	60 % Polyester - 40 % Polyamide
<b>WIDTH</b>	116 cm / 45,66 inch
<b>REPEAT</b>	H: 24 cm - 9,00 inch V: 29 cm - 11,41 inch Straight repeat
<b>WEIGHT</b>	325 gr / m <sup>2</sup>
<b>CARE</b>	
<b>TRIMMING</b>	Trimmed
<b>HANGING/REMOVING</b>	Paste the wall Strippable

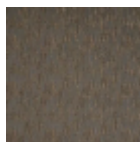
## 3 Colors



FP350001  
Nuage



FP350002  
Orage



FP350003  
Terre