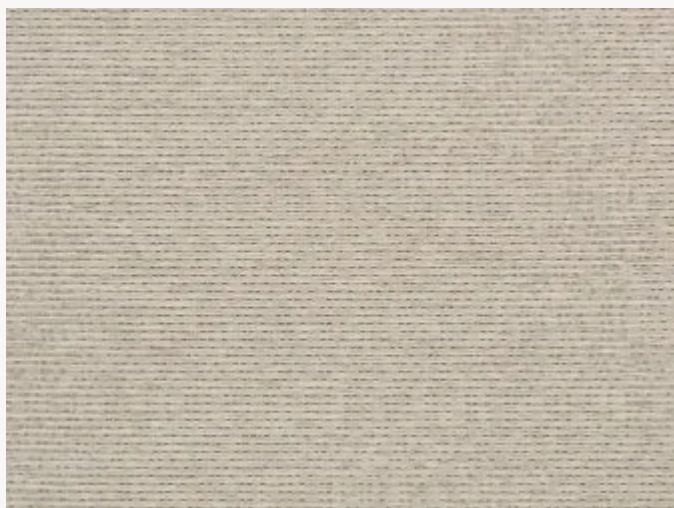


## FP457001 BOULEAU


In line with the previous GRAMINEES collections, and echoing the NATECRU collection of woven textiles, Pierre Frey presents a collection of wallcoverings inspired by nature, imitating straw weaves. White, natural or unbleached colors are associated in a resolutely contemporary way.

### FP457001 - Écorce

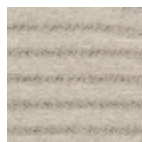


Laize : 140,00 cm / 55,11 inch

### Pierre Frey

<b>TYPE</b>	Paperbacked fabrics
<b>SALES UNIT</b>	Available per meter/yard
<b>BACKING</b>	NON WOVEN
<b>COMPOSITION</b>	61 % Polyester - 22 % Linen - 17 % Wool
<b>WIDTH</b>	140 cm / 55,11 inch
<b>REPEAT</b>	Free match
<b>WEIGHT</b>	350 gr / m <sup>2</sup>
<b>CARE</b>	
<b>TRIMMING</b>	Trimmed
<b>HANGING/REMOVING</b>	Paste the wall Wet removable
<b>NOTES</b>	Good lightfastness

# 1 Colors



FP457001  
Écorce