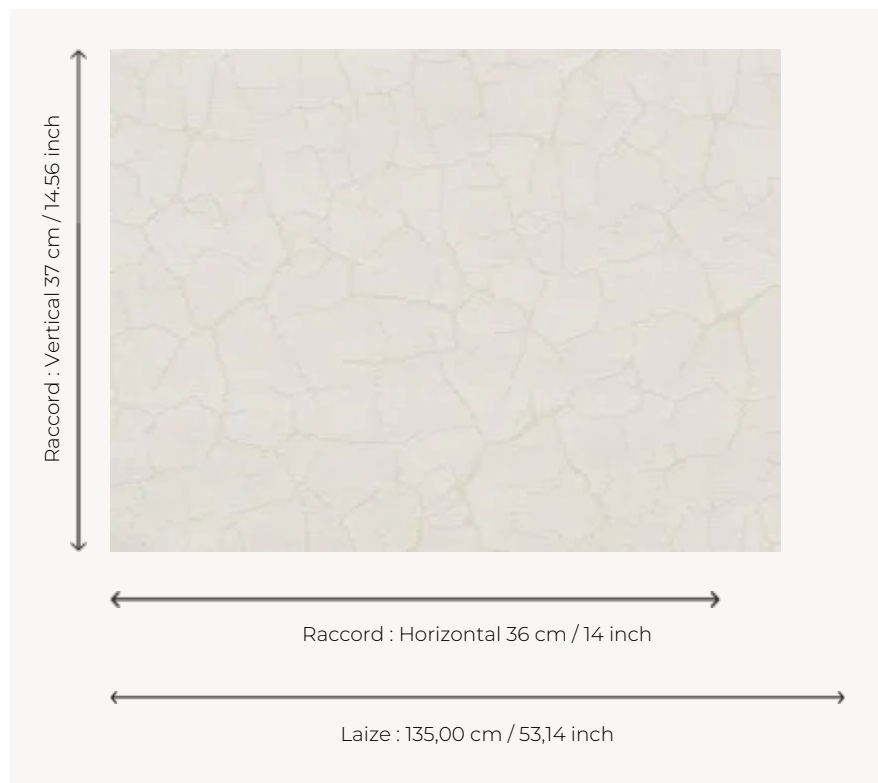



FP470003 ATACAMA II

In line with the previous GRAMINEES collections, and echoing the NATECRU collection of woven textiles, Pierre Frey presents a collection of wallcoverings inspired by nature, imitating straw weaves. White, natural or unbleached colors are associated in a resolutely contemporary way.

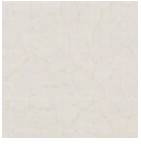
FP470003 - Neige



Pierre Frey

| | |
|-------------------------|---|
| TYPE | Paperbacked fabrics |
| SALES UNIT | Available per meter/yard |
| BACKING | NON WOVEN |
| COMPOSITION | 100 % Polyester |
| WIDTH | 135 cm / 53,14 inch |
| REPEAT | H: 36 cm - 14,00 inch V: 37 cm - 14,56 inch No side match |
| WEIGHT | 520 gr / m ² |
| CARE |  |
| TRIMMING | Trimmed |
| HANGING/REMOVING | Paste the wall Strippable |
| CERTIFICATIONS | ASTM E84 Class A |
| INFORMATION | Panel effect |

1 Colors



FP470003

Neige