


## FP620003 LA YOURTE DU NOMADE

A vertical or horizontal interpretation of a saddle cover, preserved in the Maison's archive collection. This unique piece bears witness to the privileged position that horses occupied in Persian civilization. The traditional impression makes it possible to emphasize, in trompe l'oeil, the effect of the weaving and irregularities of time. This reference is studied for vertical use, as vertical stripes on the wall, or for horizontal use, as a border.

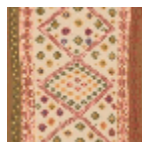
### FP620003 - Azur



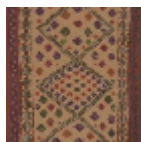
### Pierre Frey

<b>TYPE</b>	Small width printed wallpapers
<b>SALES UNIT</b>	Available per roll of 10,05 mts
<b>BACKING</b>	NON WOVEN
<b>COMPOSITION</b>	-
<b>WIDTH</b>	52 cm / 20,47 inch
<b>REPEAT</b>	H: 52 cm - 20,00 inch V: 65 cm - 25,59 inch Free match
<b>WEIGHT</b>	175 gr / m <sup>2</sup>
<b>CARE</b>	
<b>TRIMMING</b>	Trimmed
<b>HANGING/REMOVING</b>	Paste the wall Strippable
<b>CERTIFICATIONS</b>	EUROCLASS B-s1,d0 ASTM E84 Class A
<b>NOTES</b>	Good lightfastness Flame retardant backing Traditional printing technique

## 4 Colors



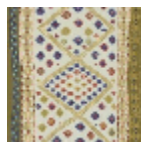
FP620001  
Acajou



FP620002  
Amarante



FP620003  
Azur



FP620004  
Amande