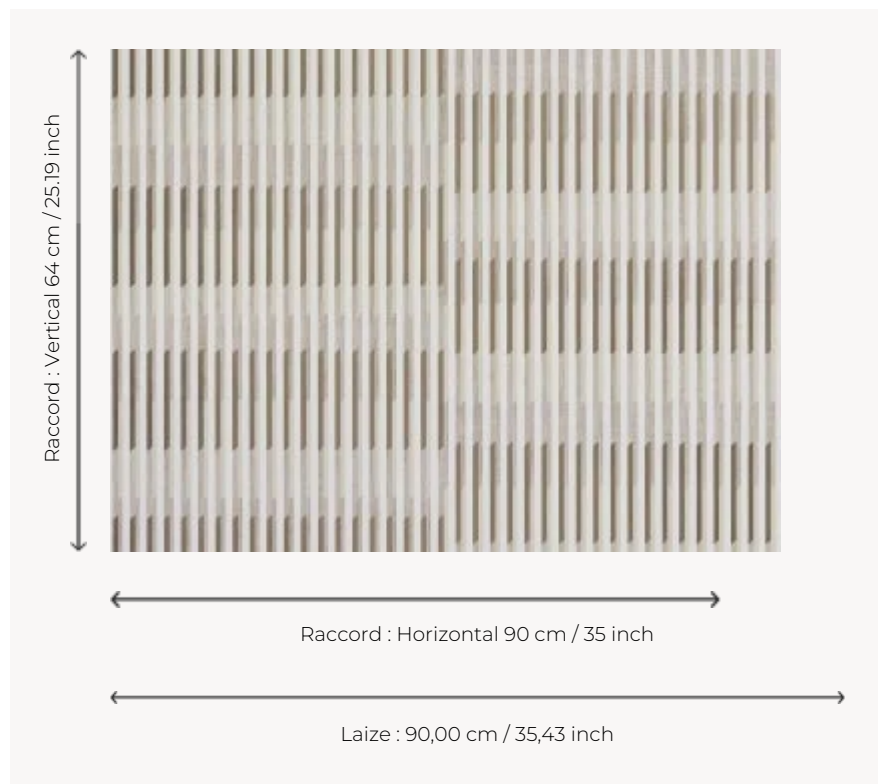



## FP805001 KEN'S LINES

A recurring theme in Ken Fulk's designs, the stripes, initially vertical, are playing with the illusion of other horizontals, following the color theories of the Bauhaus artist Josef Albers. This wallpaper shows a very sophisticated digital printing technique: metallic effect printed in transfer and use of swelling inks. Laminated on a non-woven backing, it plays with alternating matte and glossy effects.

### FP805001 - Brume



### Pierre Frey

<b>TYPE</b>	Wide width printed wallpapers
<b>ARTIST</b>	Ken Fulk
<b>SALES UNIT</b>	Available per meter/yard
<b>BACKING</b>	NON WOVEN
<b>COMPOSITION</b>	100 % Polyester
<b>WIDTH</b>	90 cm / 35,43 inch
<b>REPEAT</b>	H: 90 cm - 35,00 inch V: 64 cm - 25,19 inch Straight repeat
<b>WEIGHT</b>	205 gr / m <sup>2</sup>
<b>CARE</b>	
<b>TRIMMING</b>	Trimmed
<b>HANGING/REMOVING</b>	Paste the wall Wet removable
<b>CERTIFICATIONS</b>	EUROCLASS B-s1,d0 ASTM E84 Class A
<b>NOTES</b>	Good lightfastness Flame retardant backing
<b>BOOK</b>	F9979PPFREY30

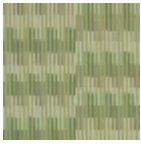
## 5 Colors



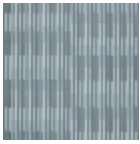
FP805001  
Brume



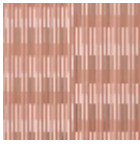
FP805002  
Orage



FP805003  
Prairie



FP805004  
Ocean



FP805005  
Corail