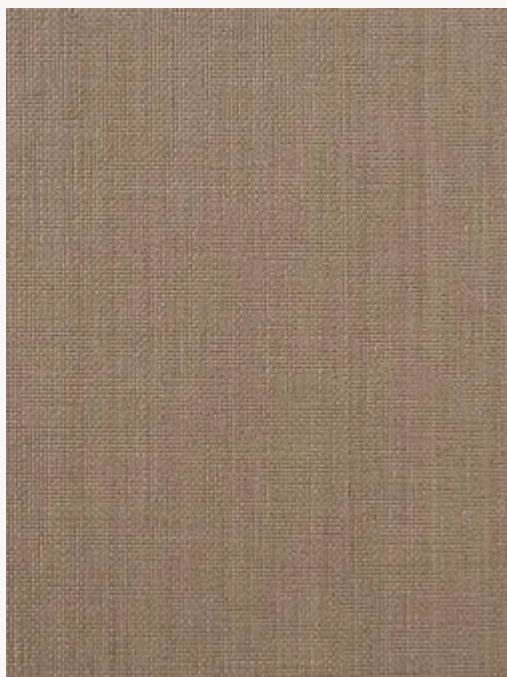




FP865006 MARIUS

Laminated on non-woven, MARIUS is a beautiful plain raffia inspired by the traditional straw mats of southern France. Its satin finish and lacquer sheen bring a modernity to its sophisticated and delicate color range.

FP865006 - Ecorce



Laize : 128,00 cm / 50,39 inch

Pierre Frey

TYPE	Plains & semi plains - Paperbacked fabrics
SALES UNIT	Available per meter/yard
BACKING	NON WOVEN
COMPOSITION	57 % Polyamide - 43 % Cotton
WIDTH	128 cm / 50,39 inch
WEIGHT	390 gr / m ²
CARE	
TRIMMING	Trimmed
HANGING/REMOVING	Paste the wall Dry strippable
BOOK	F9979PPFREY34

9 Colors



FP865001
Nacre



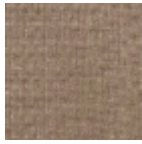
FP865003
Osier



FP865004
Sable



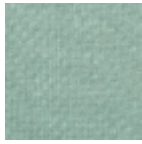
FP865005
Savane



FP865006
Ecorce



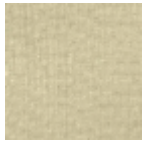
FP865008
Ballerine



FP865009
Aquatique



FP865010
Amande



FP865011
Mastic