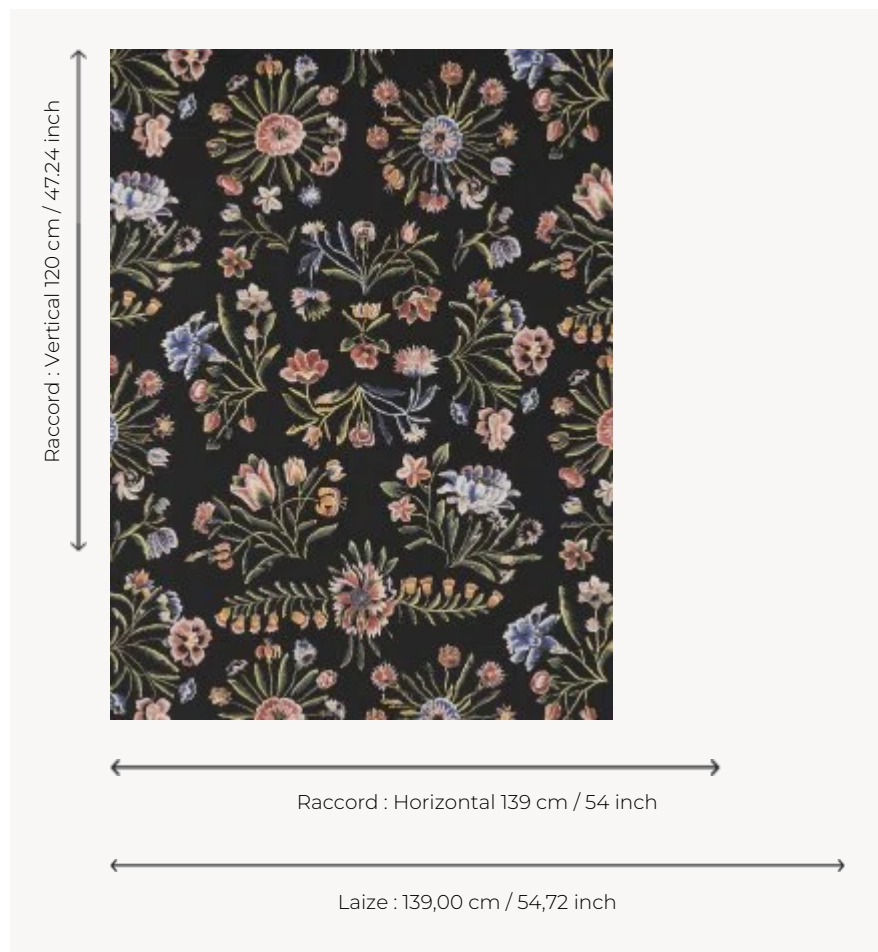



## FP880003 ROSELIA

Delicate and surprising trompe l'oeil made in 3D printing. ROSELIA reinterprets a woolen embroidery with a floral motif, handmade at the beginning of the 18th century in a French workshop and preserved in the archives of the Maison Pierre Frey. Printed in wide width on satin-finish non-woven backing. Coordinated with fabric F3685 ROSELIA.

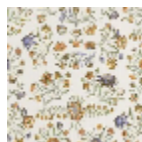
### FP880003 - Nuit



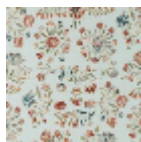
### Pierre Frey

<b>TYPE</b>	Wide width printed wallpapers - Paperbacked fabrics
<b>SALES UNIT</b>	Available per meter/yard
<b>BACKING</b>	NON WOVEN
<b>COMPOSITION</b>	-
<b>WIDTH</b>	139 cm / 54,72 inch
<b>REPEAT</b>	H: 139 cm - 54,00 inch V: 120 cm - 47,24 inch Straight repeat
<b>WEIGHT</b>	340 gr / m <sup>2</sup>
<b>CARE</b>	
<b>TRIMMING</b>	Trimmed
<b>HANGING/REMOVING</b>	Paste the wall Strippable
<b>NOTES</b>	Raised pattern
<b>BOOK</b>	F9979PPFREY33

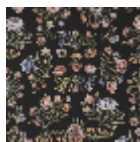
## 3 Colors



FP880001  
Aurore



FP880002  
Printemps



FP880003  
Nuit