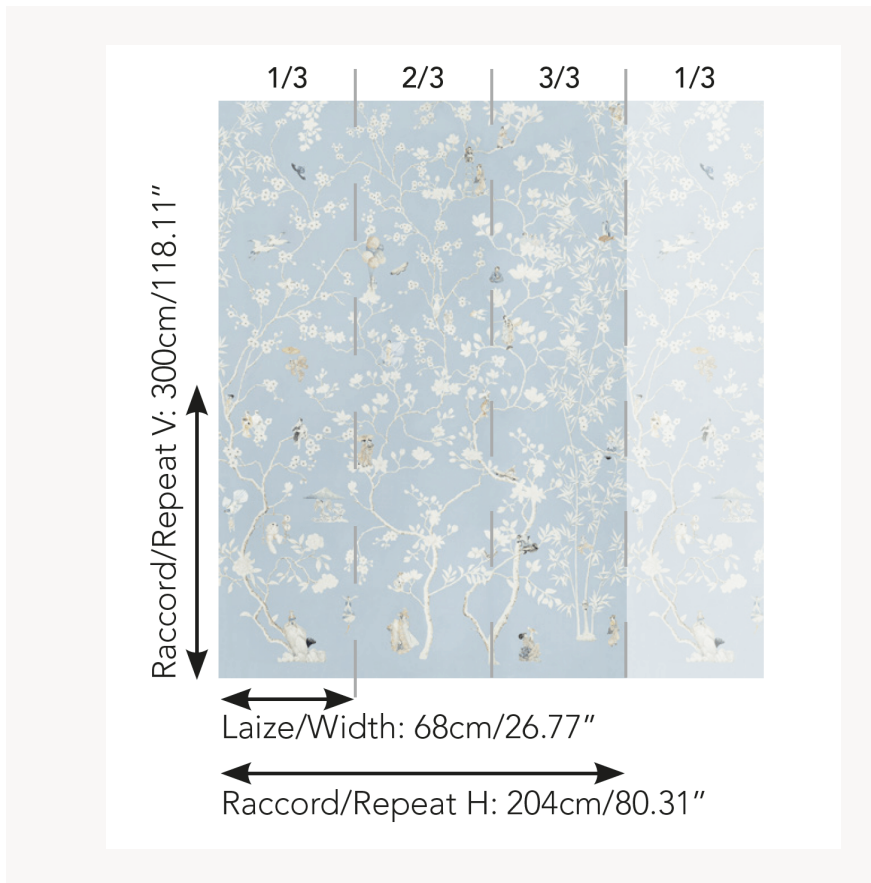


## FP912004 CHERRY KAWASAKI

Japonaiserie revisited, this stunning composition was created to dress the bedroom walls of the daughter of Alexandre de Betak, art director, producer, scenographer and designer. This combination of traditional Japanese inspiration combines a collage of selected images with surreal elements staged in the manner of Hiroshige and Hokusai (19th century Japanese Edo painters).

### FP912004 - Ciel



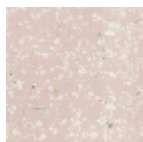
### Pierre Frey

<b>TYPE</b>	Small width printed wallpapers - Vinyls - Panoramic wallpapers
<b>ARTIST</b>	Alexandre De Betak
<b>SALES UNIT</b>	Full panoramic 300 cm x 204 cm ( 3 lengths 68 cm x 204 cm) - 118,11 in x 80,31 in( 3 lengths 26,77 in x 80,31 in)
<b>BACKING</b>	NON WOVEN
<b>COMPOSITION</b>	100 % Vinyl
<b>WIDTH</b>	68 cm / 26,77 inch
<b>REPEAT</b>	H: 204 cm - 80,00 inch V: 300 cm - 118,11 inch
<b>WEIGHT</b>	460 gr / m <sup>2</sup>
<b>CARE</b>	
<b>TRIMMING</b>	Trimmed
<b>HANGING/REMOVING</b>	Paste the wall Wet removable
<b>CERTIFICATIONS</b>	EUROCLASS B-s2,d0 ASTM E84 Class A
<b>NOTES</b>	Good lightfastness Flame retardant backing Sold as a complete artwork
<b>INFORMATION</b>	1 roll = 3 panels

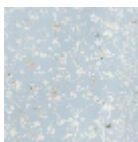
## 3 Colors



FP912001  
Vertdegris



FP912002  
Buvard



FP912004  
Ciel