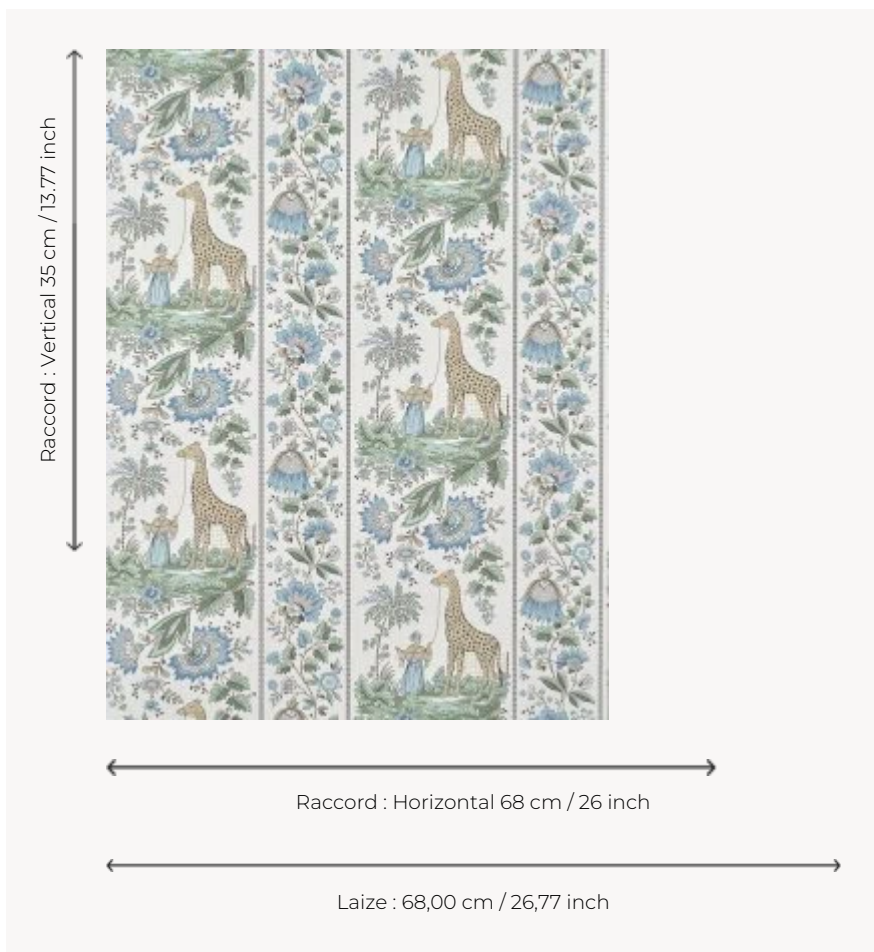



## FP954001 ISMAELIA

ISMAELIA reproduces a canvas printed around 1830, entitled "La girafe", kept at the Musée de l'impression sur Etoffes in Mulhouse. The animal intended for Charles X, unloaded in Marseille in 1826, crossed France to reach the menagerie of plants in Paris. This extraordinary event gave birth to the "giraffomania" in the decorative arts.

### FP954001 - Bleu aqua



### Pierre Frey

<b>TYPE</b>	Small width printed wallpapers
<b>SALES UNIT</b>	Available per roll of 10,05 mts
<b>BACKING</b>	NON WOVEN
<b>COMPOSITION</b>	-
<b>WIDTH</b>	68 cm / 26,77 inch
<b>REPEAT</b>	H: 68 cm - 26,00 inch V: 35 cm - 13,77 inch Straight repeat
<b>WEIGHT</b>	155 gr / m <sup>2</sup>
<b>CARE</b>	
<b>TRIMMING</b>	Trimmed
<b>HANGING/REMOVING</b>	Paste the wall Strippable
<b>CERTIFICATIONS</b>	EUROCLASS B-s1,d0 ASTM E84 Class A
<b>NOTES</b>	Good lightfastness Flame retardant backing Traditional printing technique

## 4 Colors



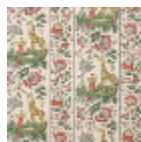
FP954001  
Bleu aqua



FP954002  
Fuchsia anis



FP954003  
Miel celadon



FP954004  
Brique vert