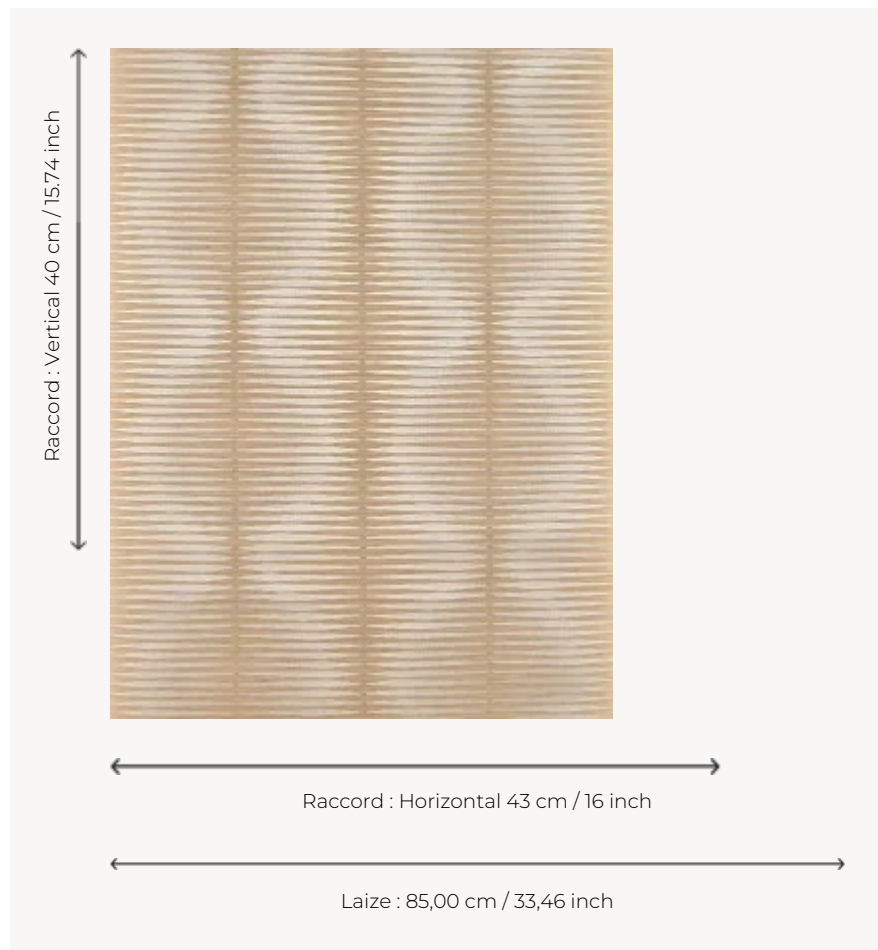


# FP970003 VAIMA

Stopover on the beach for this magnificent drawing embroidered on straw and backed on paper evoking a geometrical vision of the sea with reflections of the sun on the paradisiacal oceans.

## FP970003 - Dune



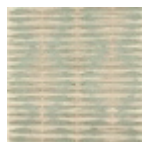
## Pierre Frey

<b>TYPE</b>	Embossed patterns - Straws and similar materials - Embroideries
<b>SALES UNIT</b>	Available per roll of 7,20 mts
<b>BACKING</b>	PAPER
<b>COMPOSITION</b>	31 % Viscose - 23 % Sisa - 20 % Paper - 14 % Cotton - 12 % Polyester
<b>WIDTH</b>	85 cm / 33,46 inch
<b>REPEAT</b>	H: 43 cm - 16,00 inch V: 40 cm - 15,74 inch Straight repeat
<b>WEIGHT</b>	465 gr / m <sup>2</sup>
<b>CARE</b>	
<b>TRIMMING</b>	Trimmed
<b>HANGING/REMOVING</b>	Paste the paper Wet removable
<b>INFORMATION</b>	Panel effect
<b>BOOK</b>	F9979PPFREY40

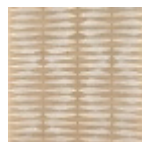
### 3 Colors



FP970001  
Sable



FP970002  
Lagon



FP970003  
Dune