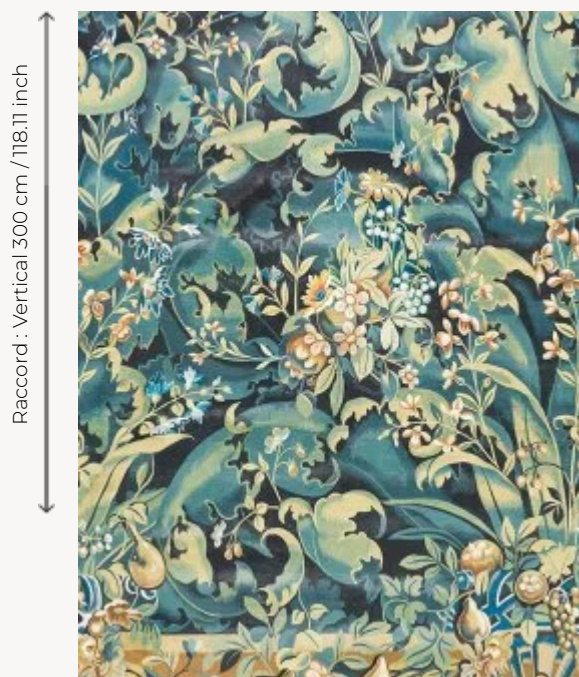


## FP990001 ARISTOLOCHES

Contemporary reinterpretation of a 19th century tapestry cartoon kept in the Pierre Frey heritage collection. It depicts a design of cabbage leaves, very popular in the 16th century, known as aristoloche. Initially decorating the walls of castles, these tapestries came back into fashion during the Second Empire under the influence of the historicizing movement in the decorative arts. The delicate tones of the vegetation and the materiality of the textile support, laminated on non-woven backing, make it a magical and timeless design.

### FP990001 - Verdure




Raccord : Vertical 300 cm / 118,11 inch

Raccord : Horizontal 172 cm / 67 inch

Laize : 86,00 cm / 33,85 inch

### Pierre Frey

<b>TYPE</b>	Panoramic wallpapers - Printed wallpapers
<b>SALES UNIT</b>	Available per panel
<b>BACKING</b>	NON WOVEN
<b>COMPOSITION</b>	100 % Paper
<b>WIDTH</b>	86 cm / 33,85 inch
<b>REPEAT</b>	H: 172 cm - 67,00 inch V: 300 cm - 118,11 inch
<b>WEIGHT</b>	240 gr / m <sup>2</sup>
<b>CARE</b>	
<b>TRIMMING</b>	Trimmed
<b>HANGING/REMOVING</b>	Paste the wall Strippable
<b>NOTES</b>	Sold as a complete artwork
<b>INFORMATION</b>	1 roll = 2 panels

## 1 Colors



FP990001  
Verdure