


## LP101004 MADAME TALLIEN

This woman played an important role during the Revolution, saving many people from the guillotine. This design reproduces a type of wallpaper that is characteristic of the neoclassical trend at the end of the 18th century, and is preserved in our archives. It is made up of arabesque rinceaux, floral components in bouquets or garlands as well as an egg-and-dart cartouche representing a pair of doves. Screen printing by hand.

### LP101004 - Vert empire



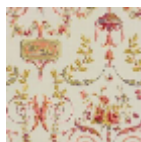
### Le manach

<b>TYPE</b>	Small width printed wallpapers
<b>SALES UNIT</b>	Available per roll of 5,45 mts
<b>BACKING</b>	PAPER
<b>COMPOSITION</b>	-
<b>WIDTH</b>	57 cm / 22,44 inch
<b>REPEAT</b>	H: 57 cm - 22,00 inch V: 120 cm - 47,24 inch Straight repeat
<b>WEIGHT</b>	140 gr / m <sup>2</sup>
<b>CARE</b>	
<b>TRIMMING</b>	Not trimmed
<b>HANGING/REMOVING</b>	Paste the paper Wet removable
<b>CERTIFICATIONS</b>	EUROCLASS B-s1,d0 ASTM E84 Class A
<b>NOTES</b>	Hand screen printed
<b>INFORMATION</b>	Soaking time before hanging: maximum 2 minutes. Use the trim & join marks during installation. Double-cut installation.
<b>BOOK</b>	L9979PPLM01

## 4 Colors



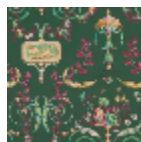
LP101001  
Beige



LP101002  
Garance



LP101003  
Rose



LP101004  
Vert empire