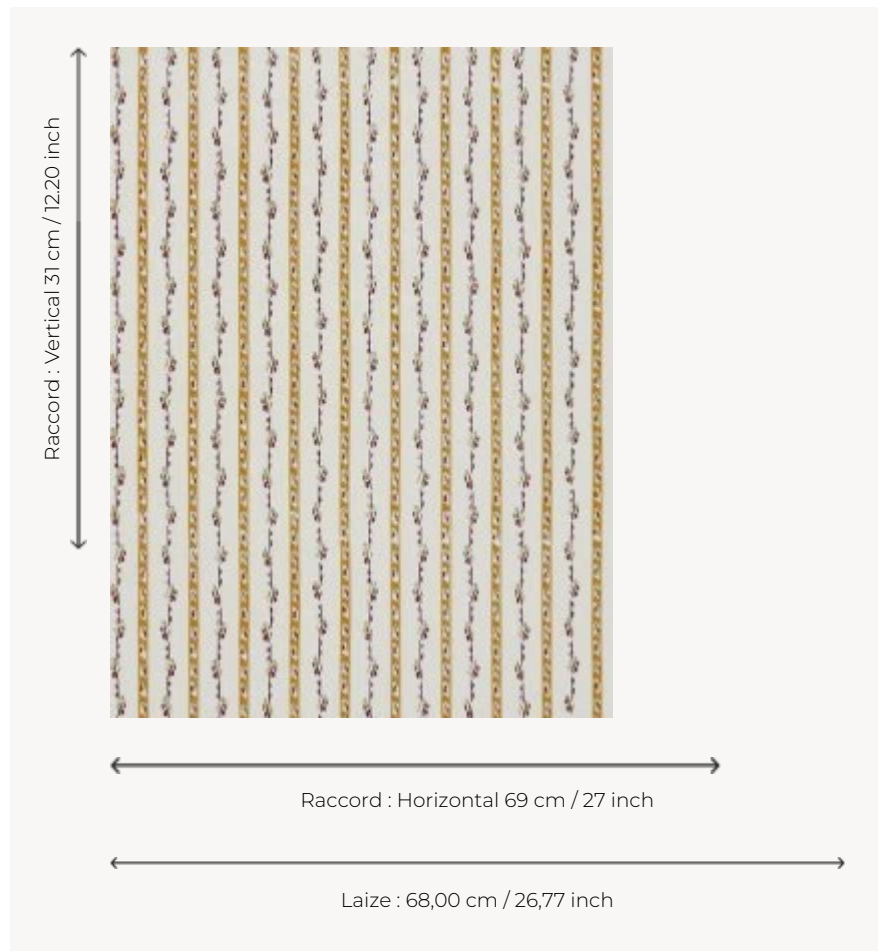



# LP106001 MADAME ELISABETH

Named after the sister of Louis XVI, this wallpaper evokes the "chiné à la branche" method, which was in fashion at the end of the 18th century in both clothing and interior design. This technique consists of partially dyeing small groups of thread, called "branches", before weaving. This technique is similar to ikat, but it produces typical European designs consisting of flowers and stripes. It was very popular in the 18th century and printing manufacturers were quick to reproduce these blurred-contour motifs through block printing. Screen printing by hand.

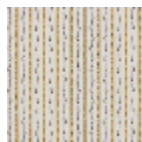
## LP106001 - Tournesol



## Le manach

<b>TYPE</b>	Small width printed wallpapers
<b>SALES UNIT</b>	Available per roll of 4,57 mts
<b>BACKING</b>	PAPER
<b>COMPOSITION</b>	-
<b>WIDTH</b>	68 cm / 26,77 inch
<b>REPEAT</b>	H: 69 cm - 27,00 inch V: 31 cm - 12,20 inch Straight repeat
<b>WEIGHT</b>	140 gr / m <sup>2</sup>
<b>CARE</b>	
<b>TRIMMING</b>	Not trimmed
<b>HANGING/REMOVING</b>	Paste the paper Wet removable
<b>CERTIFICATIONS</b>	EUROCLASS B-s1,d0 ASTM E84 Class A
<b>NOTES</b>	Hand screen printed
<b>INFORMATION</b>	Soaking time before hanging: maximum 2 minutes. Use the trim & join marks during installation. Double-cut installation.
<b>BOOK</b>	L9979PPLM01

## 3 Colors



LP106001  
Tournesol



LP106002  
Garance



LP106003  
Océan