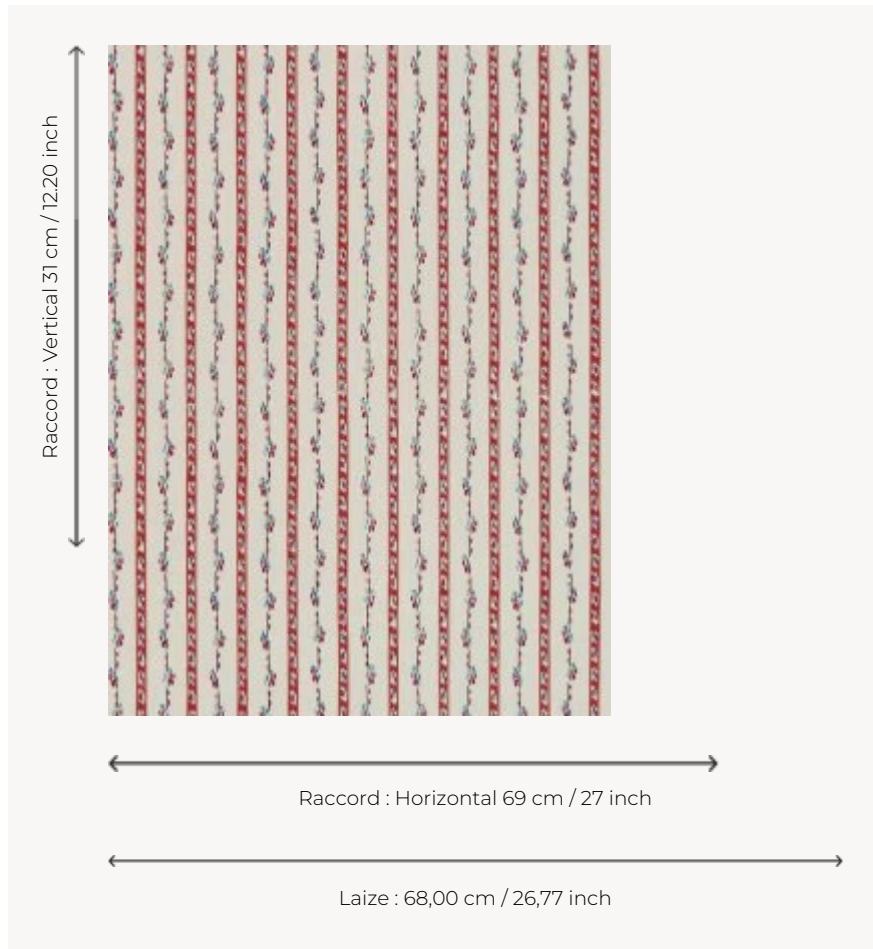



LP106002 MADAME ELISABETH

Named after the sister of Louis XVI, this wallpaper evokes the "chiné à la branche" method, which was in fashion at the end of the 18th century in both clothing and interior design. This technique consists of partially dyeing small groups of thread, called "branches", before weaving. This technique is similar to ikat, but it produces typical European designs consisting of flowers and stripes. It was very popular in the 18th century and printing manufacturers were quick to reproduce these blurred-contour motifs through block printing. Screen printing by hand.

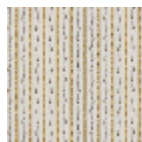
LP106002 - Garance



Le manach

TYPE	Small width printed wallpapers
SALES UNIT	Available per roll of 4,57 mts
BACKING	PAPER
COMPOSITION	-
WIDTH	68 cm / 26,77 inch
REPEAT	H: 69 cm - 27,00 inch V: 31 cm - 12,20 inch Straight repeat
WEIGHT	140 gr / m ²
CARE	
TRIMMING	Not trimmed
HANGING/REMOVING	Paste the paper Wet removable
CERTIFICATIONS	EUROCLASS B-s1,d0 ASTM E84 Class A
NOTES	Hand screen printed
INFORMATION	Soaking time before hanging: maximum 2 minutes. Use the trim & join marks during installation. Double-cut installation.
BOOK	L9979PPLM01

3 Colors



LP106001
Tournesol



LP106002
Garance



LP106003
Océan