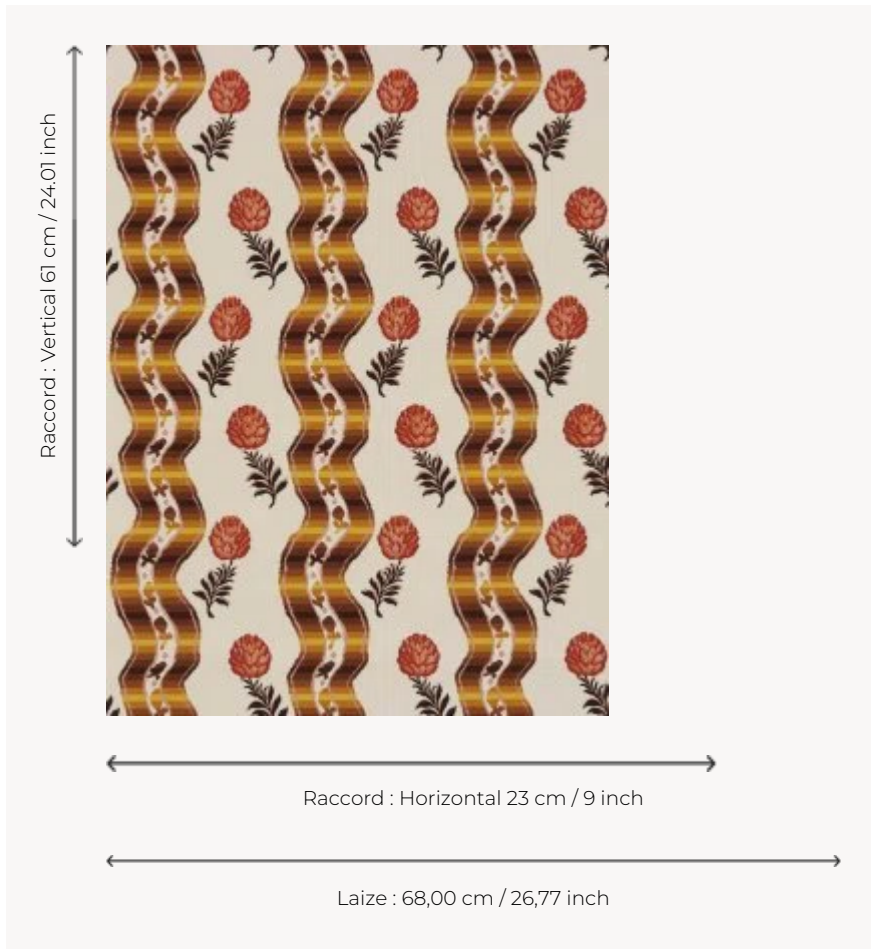


## LP107001 POMMES DE PIN

The motif of this wallpaper reproduces a Valoise from the start of the 18th century. This one was mentioned in corporate by-laws from 1669 and is made of a very fine silk cloth fabric that was in fashion in the late 17th and early 18th centuries. Having an extraordinary sheen, it is embellished with various motifs, flowers in particular. This document was used many times by Le Manach, which first reproduced it in lampas before making it into one of the emblematic prints of its collection under the reference L2454. Screen printing by hand.

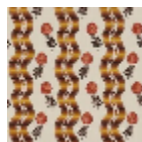
### LP107001 - Mordore



### Le manach

<b>TYPE</b>	Small width printed wallpapers
<b>SALES UNIT</b>	Available per roll of 4,57 mts
<b>BACKING</b>	PAPER
<b>COMPOSITION</b>	-
<b>WIDTH</b>	68 cm / 26,77 inch
<b>REPEAT</b>	H: 23 cm - 9,00 inch V: 61 cm - 24,01 inch Straight repeat
<b>WEIGHT</b>	140 gr / m <sup>2</sup>
<b>CARE</b>	
<b>TRIMMING</b>	Not trimmed
<b>HANGING/REMOVING</b>	Paste the paper Wet removable
<b>CERTIFICATIONS</b>	EUROCLASS B-s1,d0 ASTM E84 Class A
<b>NOTES</b>	Hand screen printed
<b>INFORMATION</b>	Soaking time before hanging: maximum 2 minutes. Use the trim & join marks during installation. Double-cut installation.
<b>BOOK</b>	L9979PPLM01

## 4 Colors



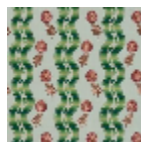
LP107001  
Mordore



LP107002  
Crème



LP107003  
Dune



LP107004  
Céladon