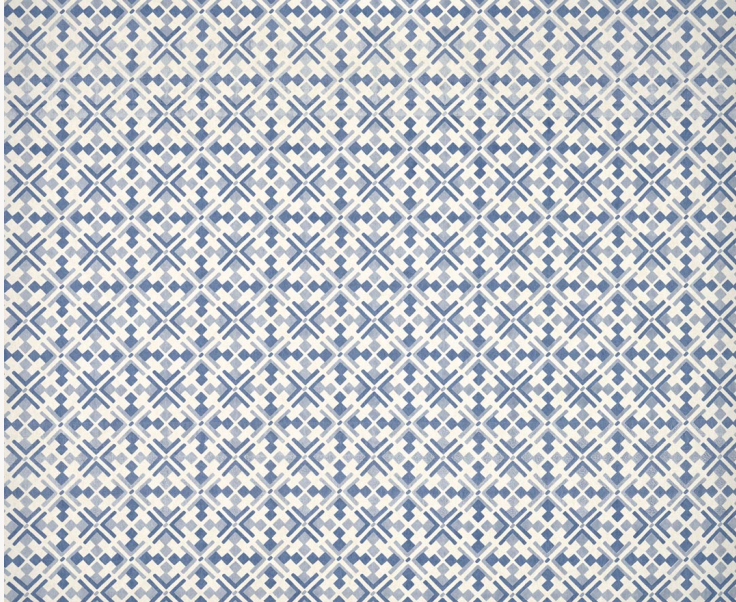


TP601002 LUNA

LUNA's modernist two-tone diamond pattern is inspired by the London style of the 60s and 70s.

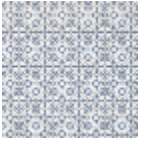
TP601002 -



Thorp of London

TYPE	-
TECHNIQUE	-
SALES UNIT	Available per meter/yard
BACKING	-
GROUND THORP OF LONDON	TS030 - Susan Ivory
COMPOSITION	100 % Non-woven
NUMBER OF COLORS	2
COLORS	A- 12 B- 33
WIDTH	151 cm / 59,44 inch
DESIGN WIDTH	124 cm / 48,81 inch
REPEAT	H: 12 cm - 4,72 inch V: 12 cm - 4,72 inch
WEIGHT	-
CARE	-
TRIMMING	-
HANGING / REMOVING	-

1 Colors



TP601002