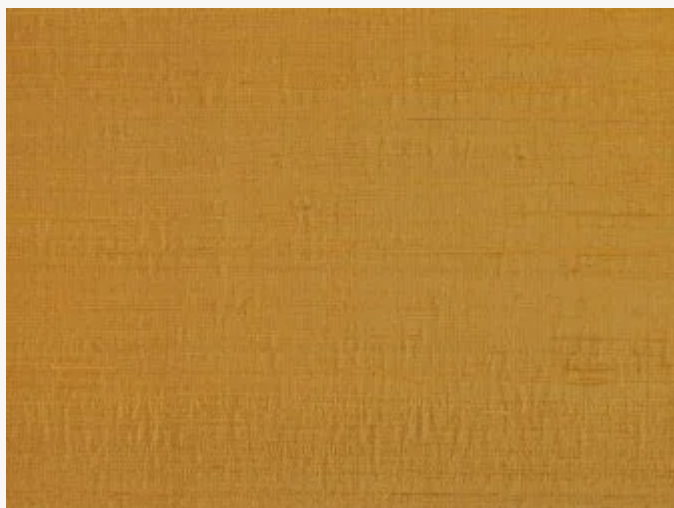


## BP324009 LA ROUTE DE LA SOIE


Soie sauvage unie en 10 coloris, rappelant l'opulence et les teintes chatoyantes des robes de cour Second Empire, ces soies contrecollées sont le mariage parfait entre un savoir-faire oriental séculaire et la vision novatrice de la Maison Pierre Frey.

### BP324009 - Or

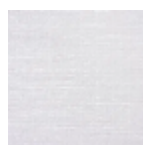


Laize : 132,00 cm / 51,96 inch

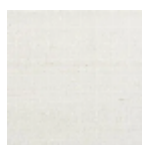
### Braquenié

<b>TYPE</b>	Unis & faux unis - Tissus contrecollés
<b>UNITÉ DE VENTE</b>	Disponible au mètre
<b>SUPPORT</b>	INTISSE
<b>COMPOSITION</b>	100 % Soie
<b>LAIZE</b>	132 cm / 51,96 inch
<b>RACCORD</b>	Raccord libre
<b>POIDS</b>	280 gr / m <sup>2</sup>
<b>ENTRETIEN</b>	
<b>EMARGEMENT</b>	Emargé
<b>POSE/DÉPOSE</b>	Encoller le mur Arrachable à sec
<b>CERTIFICATIONS</b>	EUROCLASS C-s1,d0 ASTM E84 Class A
<b>INFORMATIONS</b>	Effet panneautage

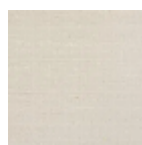
## 7 Couleurs



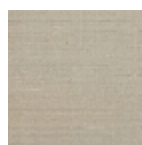
BP324001  
Blanc



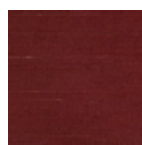
BP324002  
Ivoire



BP324003  
Creme



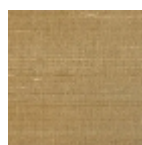
BP324004  
Beige



BP324008  
Rouge



BP324009  
Or



BP324010  
Ocre