

# FP648010 ERNESTO

Contrecollé sur un intissé grande largeur, ERNESTO, nait de l'entrecroisement irrégulier de fils mats et de fils lurex, or ou argent. ERNESTO habille les murs avec élégance et rappelle le tissage artisanal de la soie. La gamme de couleurs, douce et joyeuse, souligne son bel effet de rayures horizontales.

## FP648010 - Vanille



Laize : 140,00 cm / 55,11 inch

## Pierre Frey

<b>TYPE</b>	Unis & faux unis - Tissus contrecollés
<b>UNITÉ DE VENTE</b>	Disponible au mètre
<b>SUPPORT</b>	INTISSE
<b>COMPOSITION</b>	85 % Polyester - 15 % Acrylique
<b>LAIZE</b>	140 cm / 55,11 inch
<b>RACCORD</b>	Raccord libre
<b>POIDS</b>	270 gr / m <sup>2</sup>
<b>ENTRETIEN</b>	
<b>EMARGEMENT</b>	Emargé
<b>POSE/DÉPOSE</b>	Encoller le mur Arrachable à sec
<b>CERTIFICATIONS</b>	ASTM E84 Class A
<b>INFORMATIONS</b>	Effet panneautage
<b>LIASSE</b>	F9979PPFREY35

# 19 Couleurs



FP648001  
Creme



FP648002  
Blanc



FP648003  
Perle



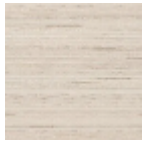
FP648004  
Argent



FP648005  
Greige



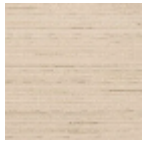
FP648006  
Nuage



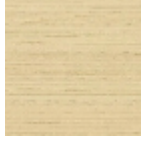
FP648007  
Osier



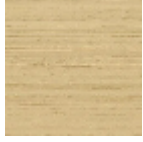
FP648008  
Ivoire



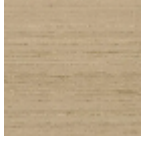
FP648009  
Paille



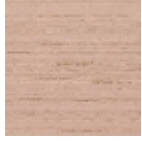
FP648010  
Vanille



FP648011  
Ble



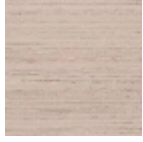
FP648012  
Avoine



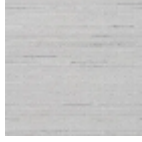
FP648013  
Peche



FP648014  
Melon



FP648015  
Nelori



FP648017  
Glacier



FP648019  
Azur



FP648020  
Aqua



FP648021  
Celadon