

FP863015 SOFIA


SOFIA, un revêtement mural au relief élégant, au subtil motif géométrique, tissé dans nos ateliers du nord de la France. Soucieuse de proposer un nouvel uni raffiné pour orner les murs, la Maison Pierre Frey a rigoureusement choisi et associé un mélange de fibres. Contrecollé sur un intissé de grande qualité, SOFIA est raclé d'une encre mate et décliné en 15 tons. Un effet de panneautage lui confère un effet très naturel.

FP863015 - Celadon

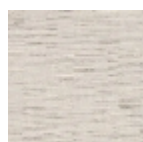


Laize : 130,00 cm / 51,18 inch

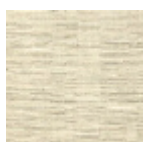
Pierre Frey

TYPE	Unis & faux unis - Tissus contrecollés
UNITÉ DE VENTE	Disponible au mètre
SUPPORT	INTISSE
COMPOSITION	44 % Lin - 32 % Coton - 17 % Acrylique - 6 % Polyester
LAIZE	130 cm / 51,18 inch
RACCORD	Raccord libre
POIDS	490 gr / m ²
ENTRETIEN	
EMARGEMENT	Emargé
POSE/DÉPOSE	Encoller le mur Arrachable au mouillé
CERTIFICATIONS	ASTM E84 Class A
INFORMATIONS	Effet panneautage
LIASSE	F9979PPFREY39

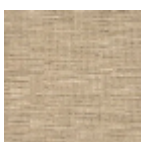
15 Couleurs



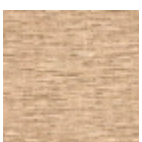
FP863001
Calcaire



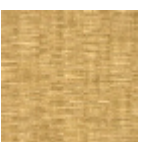
FP863002
Perle



FP863003
Craie



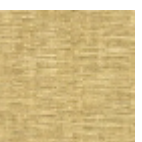
FP863004
Saumon



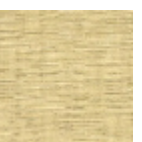
FP863006
Paille



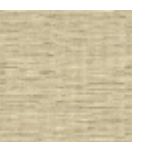
FP863007
Ble



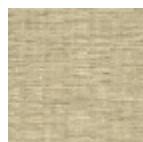
FP863008
Orge



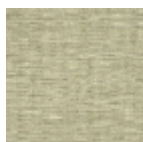
FP863009
Travertin



FP863010
Sable



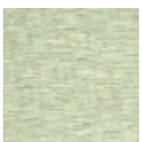
FP863011
Corde



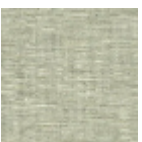
FP863012
Lichen



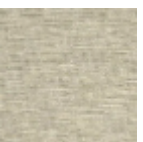
FP863013
Citrus



FP863014
Opale



FP863015
Celadon



FP863016
Galet