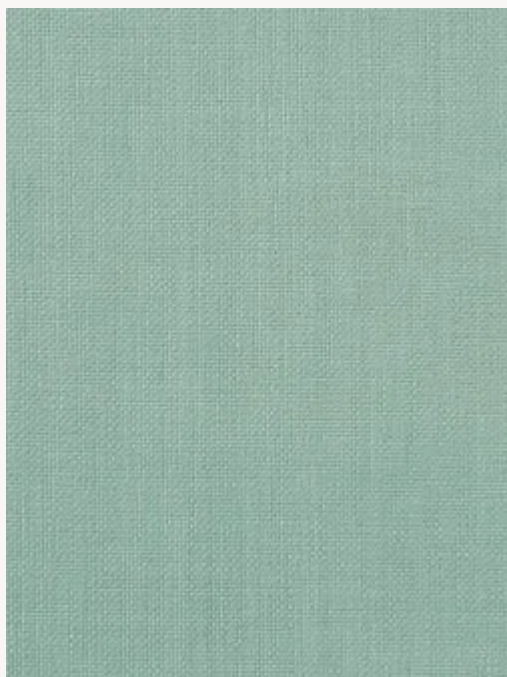


FP865009 MARIUS


Contrecollé sur intissé, MARIUS est un bel uni raphia s'inspirant des nattes de paille traditionnelles du sud de la France. Son aspect satiné et ses reflets de laque apportent une grande modernité à sa gamme de couleurs sophistiquée et délicate.

FP865009 - Aquatique

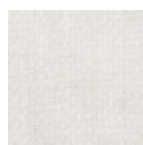


Laize : 128,00 cm / 50,39 inch

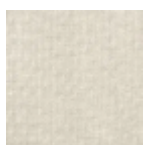
Pierre Frey

TYPE	Unis & faux unis - Tissus contrecollés
UNITÉ DE VENTE	Disponible au mètre
SUPPORT	INTISSE
COMPOSITION	57 % Polyamide - 43 % Coton
LAIZE	128 cm / 50,39 inch
POIDS	390 gr / m ²
ENTRETIEN	
EMARGEMENT	Emargé
POSE/DÉPOSE	Encoller le mur Pelable à sec
LIASSE	F9979PPFREY34

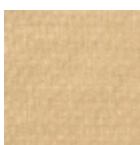
10 Couleurs



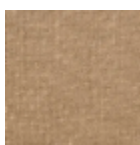
FP865001
Nacre



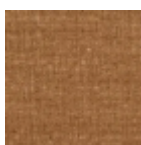
FP865002
Chaux



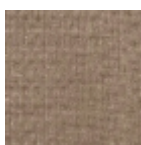
FP865003
Osier



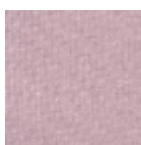
FP865004
Sable



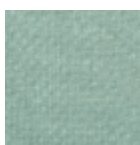
FP865005
Savane



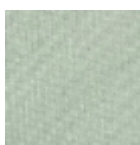
FP865006
Ecorce



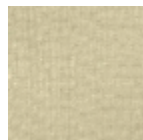
FP865008
Ballerine



FP865009
Aquatique



FP865010
Amande



FP865011
Mastic