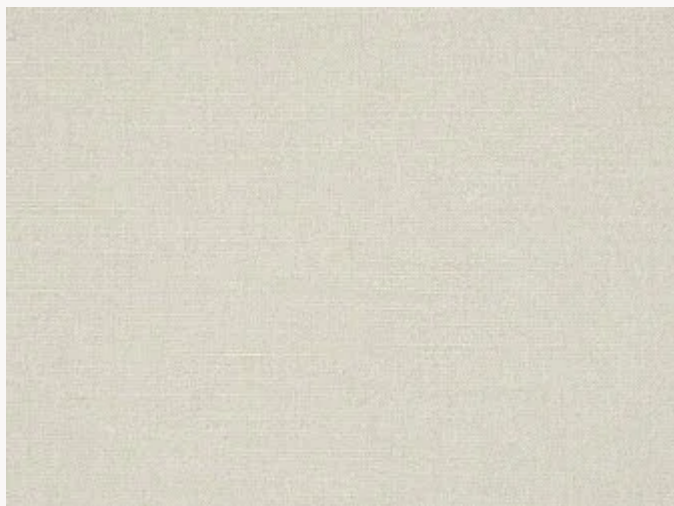


# FP921001 RITA


Textile structuré aux fils irréguliers majoritairement composé de lin, contrecollé sur intissé.

## FP921001 - Blanc

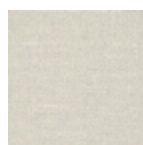


Laize : 137,00 cm / 53,93 inch

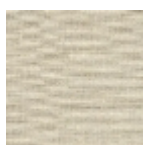
## Pierre Frey

<b>TYPE</b>	Unis & faux unis - Tissus contrecollés
<b>UNITÉ DE VENTE</b>	Disponible au mètre
<b>SUPPORT</b>	INTISSE
<b>COMPOSITION</b>	88 % Lin - 12 % Viscose
<b>LAIZE</b>	137 cm / 53,93 inch
<b>RACCORD</b>	Raccord libre
<b>POIDS</b>	280 gr / m <sup>2</sup>
<b>ENTRETIEN</b>	
<b>EMARGEMENT</b>	Emargé
<b>POSE/DÉPOSE</b>	Encoller le mur Arrachable au mouillé
<b>CERTIFICATIONS</b>	ASTM E84 Class A
<b>INFORMATIONS</b>	Irrégularité naturelle de la fibre Effet panneautage
<b>LIASSE</b>	F9979PPFREY36

## 2 Couleurs



FP921001  
Blanc



FP921002  
Corde