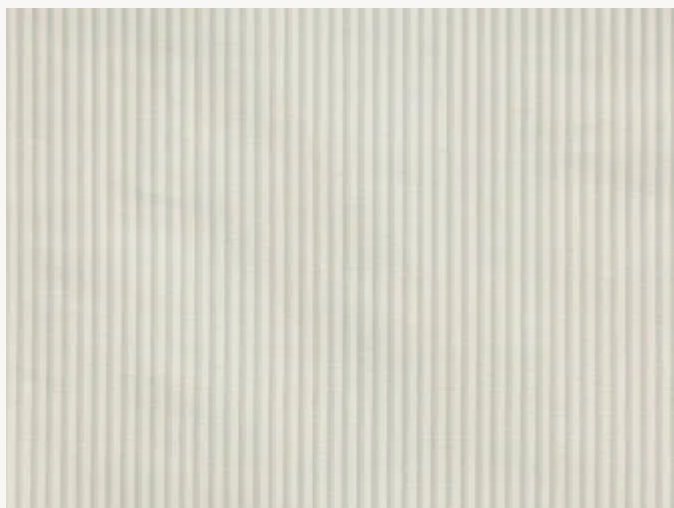


B7576004 AUGUSTINE

Charmante rayure de taffetas de soie coordonnée à la broderie Herbier. Cette fine rayure Directoire est un incontournable du XVIIIe siècle.

B7576004 - Verveine

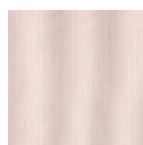


Laize : 136,00 cm / 53,54 inch

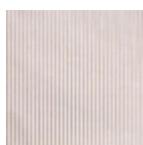
Braquenié

TYPE	-
UTILISATION	Rideau
COMPOSITION	100 % Soie
UNITÉ DE VENTE	Disponible au mètre
LAIZE	136 cm / 53,54 inch
POIDS	125 gr / ml
ENTRETIEN	

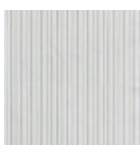
5 Couleurs



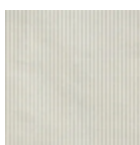
B7576001
Vieux rose



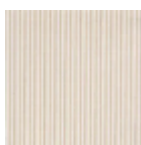
B7576002
Lilas



B7576003
Bleuet



B7576004
Verveine



B7576005
Ocre