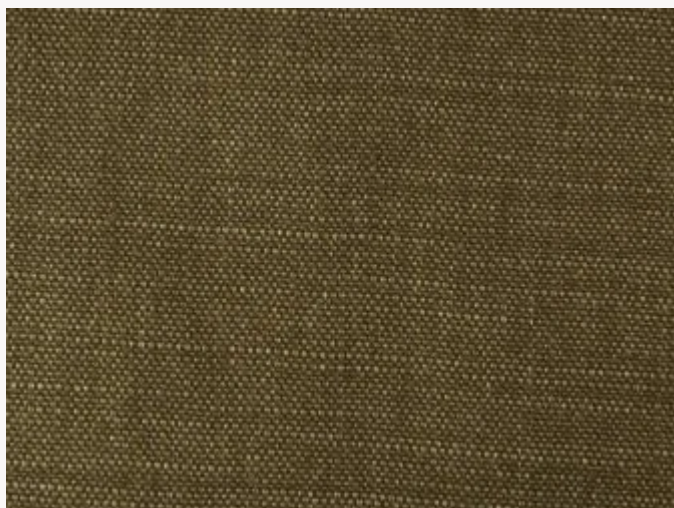




F2484014 SHABBY

Tombé lourd et voluptueux pour cette toile de lin épaisse à l'allure très contemporaine élégante et intemporelle. Son aspect vintage d¹ au lavage rend cette matière peu froissable.

F2484014 - Cachou



Laize : 145,00 cm / 57,08 inch

Pierre Frey

TYPE	Unis
UTILISATION	Siège normal
MARTINDALE	25.000 T
COMPOSITION	100 % Lin
UNITÉ DE VENTE	Disponible au mètre
LAIZE	145 cm / 57,08 inch
POIDS	725 gr / ml

ENTRETIEN



CERTIFICATIONS

BSS5852 Cigarette & match test
CAL TB 117- Pass
NFPA 260-Class 1
EN1021-1-2 en association avec une mousse difficilement inflammable

INFORMATIONS

Fibres naturelles donnant un aspect rustique au tissu
Finition délavée, tirelle sur pièce recommandée

LIASSE

F9979212027
F9979212030MINI

51 Couleurs



F2484001
Blanc



F2484002
Crème



F2484003
Pierre



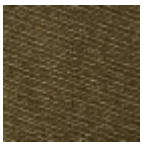
F2484007
Caillou



F2484009
Terre



F2484013
Acier



F2484014
Cachou



F2484017
Mandarine



F2484018
Buvard



F2484022
Rose



F2484026
Vermillon



F2484028
Fraise



F2484030
Absinthe



F2484031
Céladon



F2484039
Eau



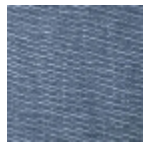
F2484040
Océan



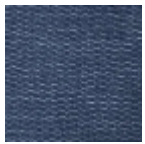
F2484041
Cendre



F2484042
Lin



F2484043
Touareg



F2484044
Indigo



F2484046
Lilas



F2484048
Citron



F2484049
Pamplemouss
e



F2484101
Polaire



F2484102
Galet



F2484103
Dune



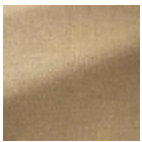
F2484104
Caramel



F2484105
Cigare



F2484106
Havane



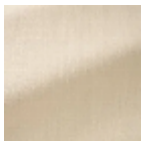
F2484107
Chêne



F2484108
Houblon



F2484109
Blond



F2484110
Beurre



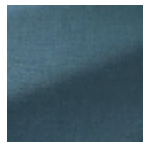
F2484111
Opaline



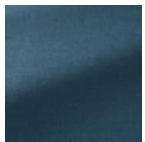
F2484112
Tempête



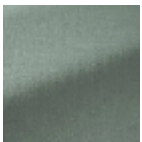
F2484113
Delft



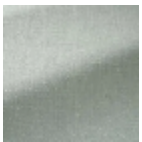
F2484114
Colvert



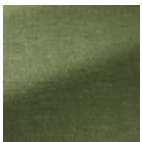
F2484115
Pétrole



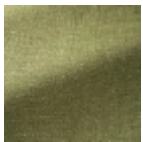
F2484116
Romarin



F2484117
Aqua



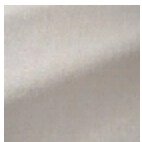
F2484118
Avocat



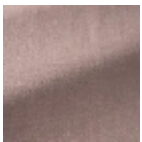
F2484119
Pois



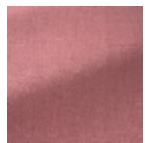
F2484120
Amande



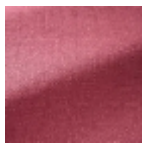
F2484121
Soja



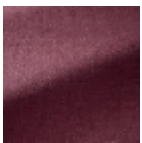
F2484122
Rose ancien



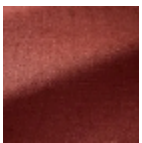
F2484123
Tremière



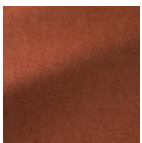
F2484124
Romance



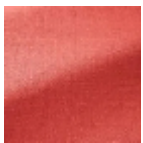
F2484125
Raisin



F2484126
Auburn



F2484127
Feu



F2484128
Corallin