

# F3222002 CHEYENNE


Ou la magie du lin... Cette toile teinte en pièce grâce à une résine spéciale présente un aspect vintage aux couleurs profondes et lumineuses. La main est nerveuse et le tombé splendide. Un nouvel incontournable.

## F3222002 - Meringue



Laize : 140,00 cm / 55,11 inch

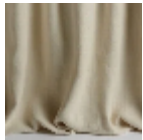
## Pierre Frey

<b>PERFORMANCE</b>	haute résistance
<b>TYPE</b>	Unis
<b>UTILISATION</b>	Siège modéré
<b>MARTINDALE</b>	40.000 T
<b>COMPOSITION</b>	100 % Lin
<b>UNITÉ DE VENTE</b>	Disponible au mètre
<b>LAIZE</b>	140 cm / 55,11 inch
<b>RACCORD</b>	Raccord libre
<b>POIDS</b>	630 gr / ml
<b>ENTRETIEN</b>	
<b>CERTIFICATIONS</b>	CAL TB 117- Pass NFPA 260-Class 1
<b>NOTES</b>	Embossed fabrics
<b>INFORMATIONS</b>	Finition délavée, tirelle sur pièce recommandée Irrégularité naturelle de la fibre Se patine à l'usage

## 31 Couleurs



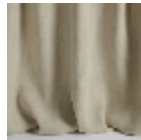
F3222001  
Craie



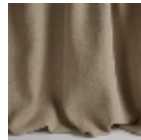
F3222002  
Meringue



F3222003  
Avoine



F3222004  
Sable



F3222005  
Naturel



F3222006  
Café au lait



F3222007  
Caramel



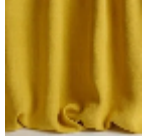
F3222008  
Souris



F3222009  
Galet



F3222010  
Fusain



F3222011  
Mimosa



F3222012  
Mordoré



F3222013  
Havane



F3222014  
Corail



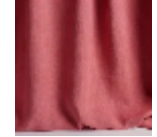
F3222015  
Goyave



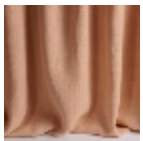
F3222016  
Cerise



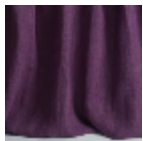
F3222017  
Pivoine



F3222018  
Mademoiselle



F3222019  
Flamingo



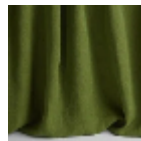
F3222020  
Nénuphar



F3222021  
Écorce



F3222022  
Amande



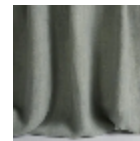
F3222023  
Liane



F3222024  
Cactus



F3222025  
Paon



F3222026  
Ecume



F3222027  
Opaline



F3222028  
Méditerranée



F3222029  
Ciel



F3222030  
Cobalt



F3222031  
Indigo