

F3222015 CHEYENNE

Ou la magie du lin... Cette toile teinte en pièce grâce à une résine spéciale présente un aspect vintage aux couleurs profondes et lumineuses. La main est nerveuse et le tombé splendide. Un nouvel incontournable.

F3222015 - Goyave



Laize : 140,00 cm / 55,11 inch

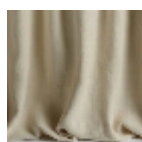
Pierre Frey

| | |
|-----------------------|--|
| PERFORMANCE | haute résistance |
| TYPE | Unis |
| UTILISATION | Siège modéré |
| MARTINDALE | 40.000 T |
| COMPOSITION | 100 % Lin |
| UNITÉ DE VENTE | Disponible au mètre |
| LAIZE | 140 cm / 55,11 inch |
| RACCORD | Raccord libre |
| POIDS | 630 gr / ml |
| ENTRETIEN | |
| CERTIFICATIONS | CAL TB 117- Pass NFPA 260-Class 1 |
| NOTES | Embossed fabrics |
| INFORMATIONS | Finition délavée, tirelle sur pièce recommandée Irrégularité naturelle de la fibre Se patine à l'usage |

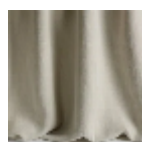
28 Couleurs



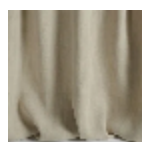
F3222001
Craie



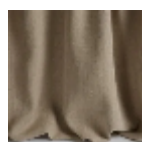
F3222002
Meringue



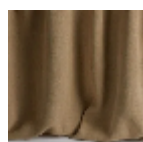
F3222003
Avoine



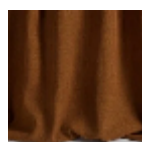
F3222004
Sable



F3222005
Naturel



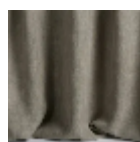
F3222006
Café au lait



F3222007
Caramel



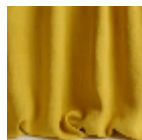
F3222008
Souris



F3222009
Galet



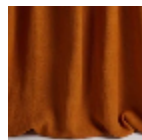
F3222010
Fusain



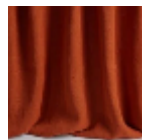
F3222011
Mimosa



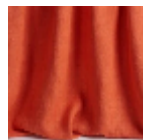
F3222012
Mordoré



F3222013
Havane



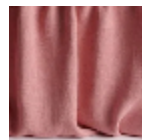
F3222014
Corail



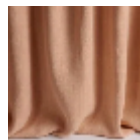
F3222015
Goyave



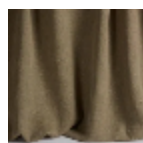
F3222016
Cerise



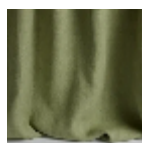
F3222017
Pivoine



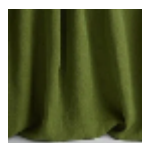
F3222019
Flamingo



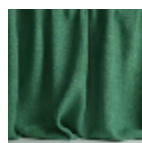
F3222021
Écorce



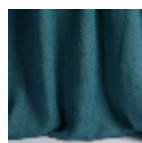
F3222022
Amande



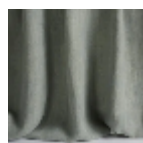
F3222023
Liane



F3222024
Cactus



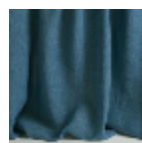
F3222025
Paon



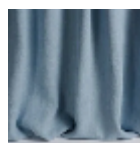
F3222026
Ecume



F3222027
Opaline



F3222028
Méditerranée



F3222029
Ciel



F3222031
Indigo