

# F3291019 MALOU


Tissé dans les ateliers Pierre Frey du Nord de la France, ce tweed bouclette aux couleurs retro mêle alpaga, laine et mohair dans un esprit contemporain.

## F3291019 - Pastèque

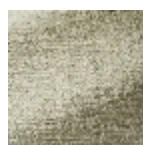


Laize : 128,00 cm / 50,39 inch

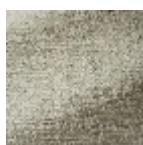
## Pierre Frey

<b>PERFORMANCE</b>	haute résistance
<b>TYPE</b>	-
<b>UTILISATION</b>	Siège modéré
<b>MARTINDALE</b>	30.000 T
<b>COMPOSITION</b>	48 % Laine - 16 % Coton - 11 % Alpaga - 10 % Polyester - 9 % Acrylique - 4 % Mohair - 2 % Polyamide
<b>UNITÉ DE VENTE</b>	Disponible au mètre
<b>LAIZE</b>	128 cm / 50,39 inch
<b>POIDS</b>	624 gr / ml
<b>ENTRETIEN</b>	
<b>CERTIFICATIONS</b>	BS5582 Cigarette & match test en association avec une mousse difficilement inflammable NFPA 260-Class 1 EN1021-1-2 en association avec une mousse difficilement inflammable
<b>NOTES</b>	Tissé dans les ateliers Pierre Frey du nord de la France. Entreprise du Patrimoine Vivant.
<b>INFORMATIONS</b>	Prévoir une confection adaptée pour renforcer les coutures
<b>LIASSE</b>	F99791808

## 14 Couleurs



F3291001  
Meringue



F3291002  
Raphia



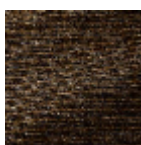
F3291003  
Pigeon



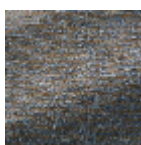
F3291004  
Châtaigne



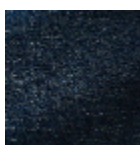
F3291005  
Cachou



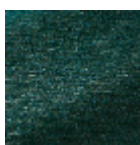
F3291006  
Abeille



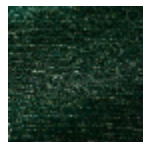
F3291008  
Bord de mer



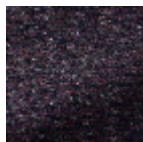
F3291010  
Marine



F3291011  
Paon



F3291012  
Emeraude



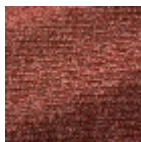
F3291014  
Quetsche



F3291016  
Ballerine



F3291018  
Homard



F3291019  
Pastèque