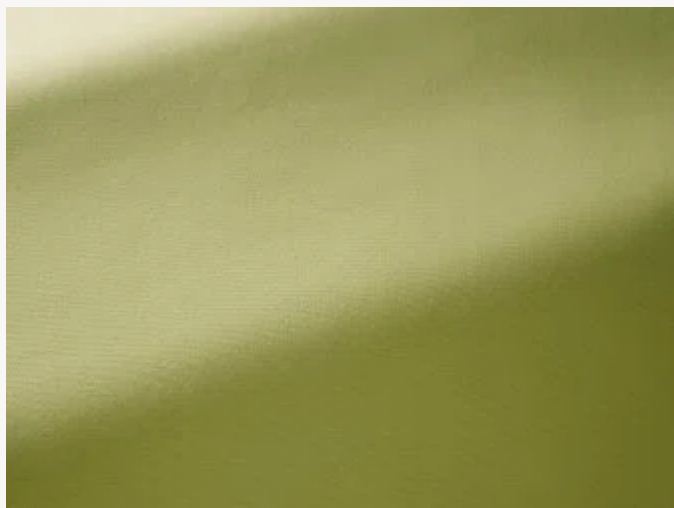




F3522019 TOILE MISTRAL

Inspirée des bâches de bateau de la côte méditerranéenne, la TOILE MISTRAL est éco-responsable et s'inscrit dans une démarche soucieuse de la traçabilité des matières premières. Elle mêle coton biologique et coton recyclé filé en Espagne et certifié GOTS. Ultra performante, elle résiste fortement à l'abrasion. Antitache, son traitement déperlant renforce sa solidité dans le temps. Tissée en France, elle se décline en une large gamme de couleurs lumineuses.

F3522019 - Absinthe

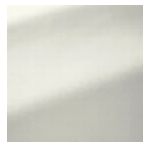


Laize : 150,00 cm / 59,05 inch

Pierre Frey

TYPE	Unis
UTILISATION	Siège intensif
MARTINDALE	60.000 T
COMPOSITION	100 % Coton
UNITÉ DE VENTE	Disponible au mètre
LAIZE	150 cm / 59,05 inch
POIDS	799 gr / ml
ENTRETIEN	
CERTIFICATIONS	NFPA 260-Class 1
NOTES	Traité antitache, déperlant
LIASSE	F997921004 F997921004MINI

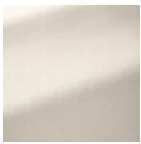
38 Couleurs



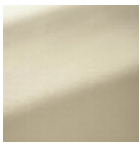
F3522001
Chaux



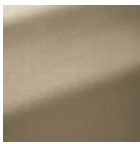
F3522002
Ecrú



F3522003
Mastic



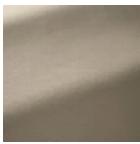
F3522004
Sable



F3522005
Kraft



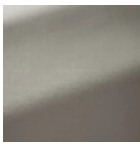
F3522006
Lin



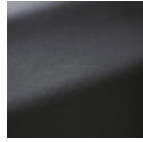
F3522007
Corde



F3522008
Brume



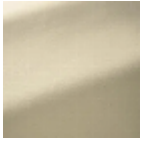
F3522009
Elephant



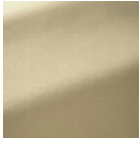
F3522010
Carbone



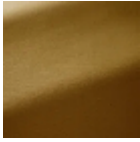
F3522012
Soleil



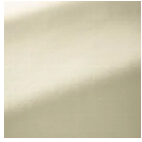
F3522014
Paille



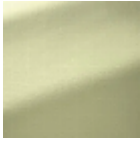
F3522015
Gazelle



F3522016
Cognac



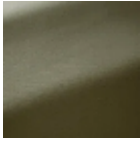
F3522017
Soja



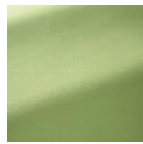
F3522018
Tilleul



F3522019
Absinthe



F3522020
Militaire



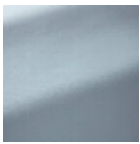
F3522021
Pousse



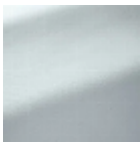
F3522022
Menthol



F3522023
Turquoise



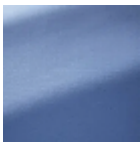
F3522024
Orange



F3522025
Opaline



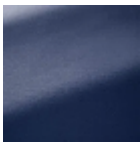
F3522026
Amande



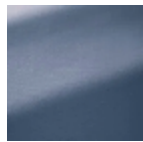
F3522027
Delft



F3522028
Horizon



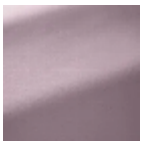
F3522029
Pétrole



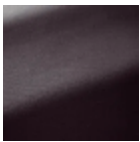
F3522030
Delphinium



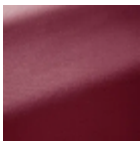
F3522032
Poudre



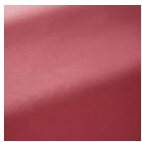
F3522033
Buvard



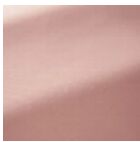
F3522035
Aubergine



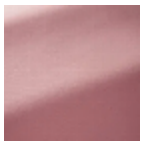
F3522036
Framboise



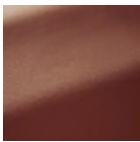
F3522037
Rhododendron



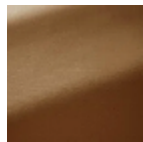
F3522038
Pêche de vign



F3522039
Bonbon



F3522040
Tuile



F3522041
Cannelle



F3522042
Puces