

F3635013 CHENILLE IGOR


Magnifique chenille de coton déclinée dans une large palette de tons sourds et contemporains, la CHENILLE IGOR se distingue par sa modernité et sa main particulièrement épaisse et douce.

F3635013 - Suie

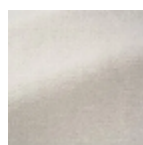


Laize : 134,00 cm / 52,75 inch

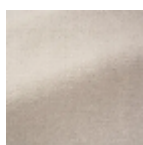
Pierre Frey

| | |
|-----------------------|---|
| PERFORMANCE | haute résistance |
| TYPE | - |
| UTILISATION | Siège normal |
| MARTINDALE | 45.000 T |
| COMPOSITION | 84 % Coton - 7 % Acrylique - 5 % Laine vierge - 2 % Polyamide - 2 % Alpaga |
| UNITÉ DE VENTE | Disponible au mètre |
| LAIZE | 134 cm / 52,75 inch |
| POIDS | 984 gr / ml |
| ENTRETIEN |  |
| CERTIFICATIONS | BS5582 Cigarette & match test en association avec une mousse difficilement inflammable EN1021-1-2 en association avec une mousse difficilement inflammable |
| INFORMATIONS | Se patine à l'usage Poil 100% coton Prévoir une confection adaptée pour renforcer les coutures |
| LIASSE | F9979212012 |

28 Couleurs



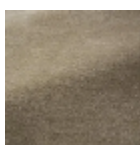
F3635001
Neige



F3635002
Coton



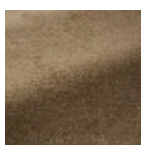
F3635003
Nuage



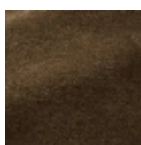
F3635004
Sable



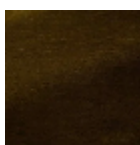
F3635005
Chamois



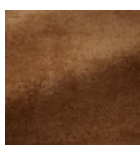
F3635006
Ourson



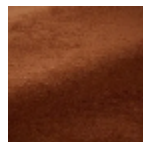
F3635007
Terre



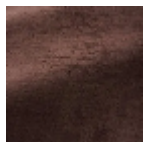
F3635008
Caramel



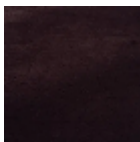
F3635009
Tangerine



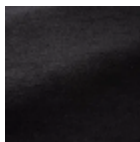
F3635010
Roux



F3635011
Clematite



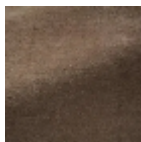
F3635012
Aubergine



F3635013
Suie



F3635014
Ardoise



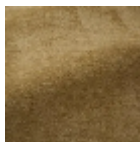
F3635015
Taupe



F3635016
Poudre



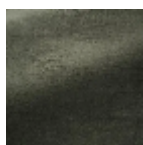
F3635017
Tilleul



F3635018
Paille



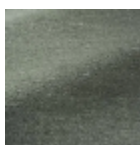
F3635019
Olive



F3635020
Lichen



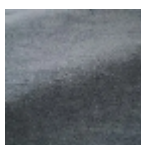
F3635021
Menthe



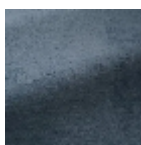
F3635022
Celadon



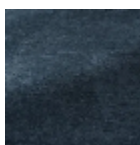
F3635023
Glacier



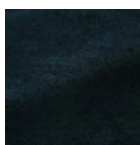
F3635024
Bleuet



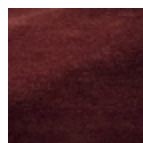
F3635025
Ciel



F3635026
Orage



F3635027
Nuit



F3635028
Cerise