

## F3635015 CHENILLE IGOR

Magnifique chenille de coton déclinée dans une large palette de tons sourds et contemporains, la CHENILLE IGOR se distingue par sa modernité et sa main particulièrement épaisse et douce.

### F3635015 - Taupe

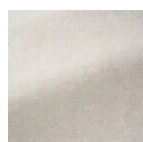


Laize : 134,00 cm / 52,75 inch

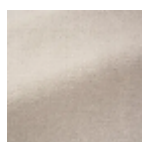
### Pierre Frey

<b>PERFORMANCE</b>	haute résistance
<b>TYPE</b>	-
<b>UTILISATION</b>	Siège normal
<b>MARTINDALE</b>	45.000 T
<b>COMPOSITION</b>	84 % Coton - 7 % Acrylique - 5 % Laine vierge - 2 % Polyamide - 2 % Alpaga
<b>UNITÉ DE VENTE</b>	Disponible au mètre
<b>LAIZE</b>	134 cm / 52,75 inch
<b>POIDS</b>	984 gr / ml
<b>ENTRETIEN</b>	
<b>CERTIFICATIONS</b>	BS5582 Cigarette & match test en association avec une mousse difficilement inflammable EN1021-1-2 en association avec une mousse difficilement inflammable
<b>INFORMATIONS</b>	Se patine à l'usage Poil 100% coton Prévoir une confection adaptée pour renforcer les coutures
<b>LIASSE</b>	F9979212012

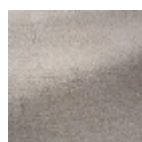
## 28 Couleurs



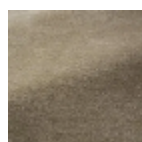
F3635001  
Neige



F3635002  
Coton



F3635003  
Nuage



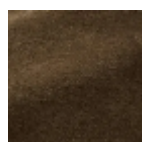
F3635004  
Sable



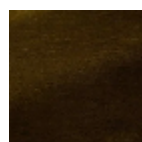
F3635005  
Chamois



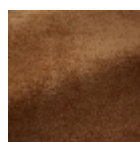
F3635006  
Ourson



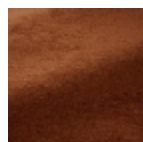
F3635007  
Terre



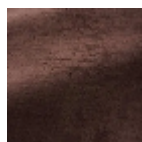
F3635008  
Caramel



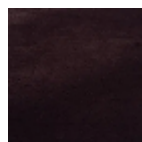
F3635009  
Tangerine



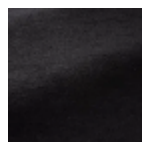
F3635010  
Roux



F3635011  
Clematite



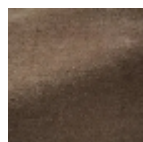
F3635012  
Aubergine



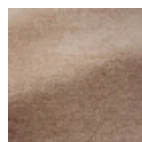
F3635013  
Suie



F3635014  
Ardoise



F3635015  
Taupe



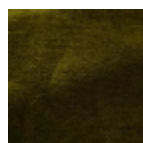
F3635016  
Poudre



F3635017  
Tilleul



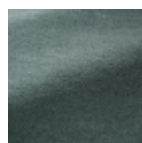
F3635018  
Paille



F3635019  
Olive



F3635020  
Lichen



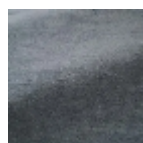
F3635021  
Menthe



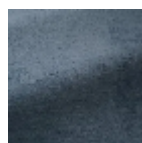
F3635022  
Celadon



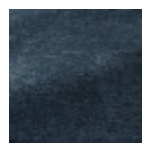
F3635023  
Glacier



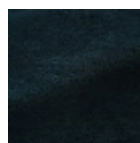
F3635024  
Bleuet



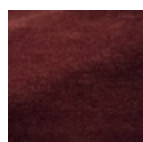
F3635025  
Ciel



F3635026  
Orage



F3635027  
Nuit



F3635028  
Cerise