



F3754005 CHENILLE SAINT GERMAIN

Ce très bel uni chenille présente une texture reliefée et une main particulièrement douce. Il est principalement décliné dans des teintes douces et naturelles.

F3754005 - Bistre



Laize : 139,00 cm / 54,72 inch

Pierre Frey

PERFORMANCE	haute résistance
TYPE	-
UTILISATION	Siège intensif
MARTINDALE	> 50.000 T
COMPOSITION	53 % Polyester - 37 % Coton - 10 % Viscose
UNITÉ DE VENTE	Disponible au mètre
LAIZE	139 cm / 54,72 inch
POIDS	931 gr / ml
ENTRETIEN	
CERTIFICATIONS	CAL TB 117- Pass NFPA 260-Class 1
INFORMATIONS	Prévoir une confection adaptée pour renforcer les coutures
LIASSE	F9979212026 F9979212029MINI

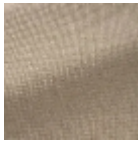
20 Couleurs



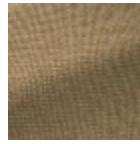
F3754001
Neige



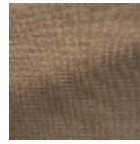
F3754002
Mineral



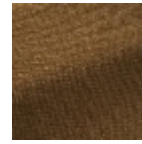
F3754003
Sable



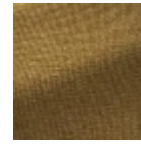
F3754004
Ble



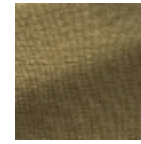
F3754005
Bistre



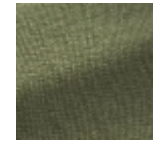
F3754006
Mordore



F3754007
Or



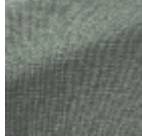
F3754008
Muscat



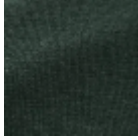
F3754009
Mousse



F3754010
Celadon



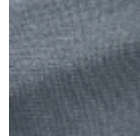
F3754011
Tempete



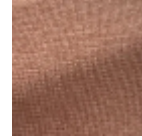
F3754012
Malachite



F3754013
Baltique



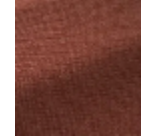
F3754014
Bretagne



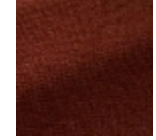
F3754015
Celeste



F3754016
Tomette



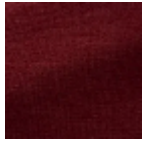
F3754017
Grenadine



F3754018
Brique



F3754019
Groseille



F3754020
Carmin