

# F3869014 COMPORTA


Haute performance Outdoor, la chenille COMPORTA au bel effet chiné se décline dans un large éventail de teintes naturelles et vibrantes. Elle allie solidité et souplesse pour une utilisation siège et rideau. Tissée dans les ateliers Pierre Frey (EPV) du nord de la France, cette belle chenille illustre l'expertise de la Maison dans le tissage de textiles Haute Performance, déperlants, antitache et résistants à la lumière.

## F3869014 - Camomille



Laize : 137,00 cm / 53,93 inch

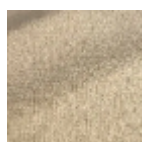
## Pierre Frey

<b>TYPE</b>	-
<b>UTILISATION</b>	Siège intensif
<b>MARTINDALE</b>	60.000 T
<b>COMPOSITION</b>	100 % Acrylique
<b>UNITÉ DE VENTE</b>	Disponible au mètre
<b>LAIZE</b>	137 cm / 53,93 inch
<b>POIDS</b>	685 gr / ml
<b>ENTRETIEN</b>	
<b>CERTIFICATIONS</b>	CAL TB 117- Pass NFPA 260-Class 1
<b>NOTES</b>	<p>Haute solidité lumière, anti-moisissure, antitache, déperlant Tissu Indoor-Outdoor Made in France (EPV/Living Heritage Mill) Tissé dans les ateliers Pierre Frey du nord de la France. Entreprise du Patrimoine Vivant.</p>
<b>INFORMATIONS</b>	<p>Utiliser des garnissages adaptés pour une utilisation "outdoor" et penser à ranger matelas et coussins dans un endroit propre et sec quand ils ne sont pas utilisés Prévoir une confection adaptée pour renforcer les coutures</p>
<b>LIASSE</b>	F9979202308MINI F9979202305 F9979202308

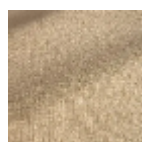
## 27 Couleurs



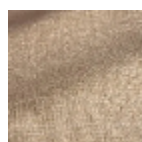
F3869001  
Ivoire



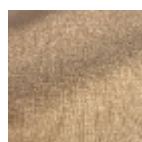
F3869002  
Creme



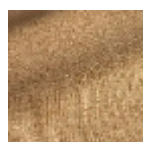
F3869003  
Beige



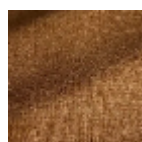
F3869004  
Lin



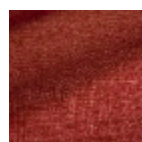
F3869005  
Sable



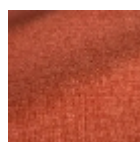
F3869006  
Caramel



F3869007  
Camel



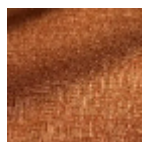
F3869008  
Bordeaux



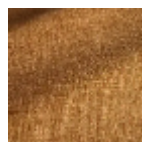
F3869009  
Sanguine



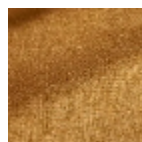
F3869010  
Capucine



F3869011  
Bronze



F3869012  
Ocre



F3869013  
Miel



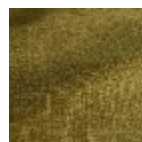
F3869014  
Camomille



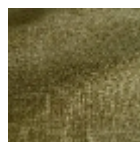
F3869015  
Verveine



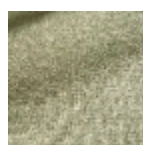
F3869016  
Asperge



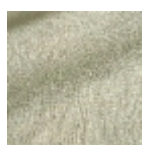
F3869017  
Olive



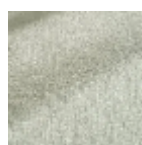
F3869018  
Cactus



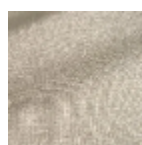
F3869019  
Sauge



F3869020  
Amande



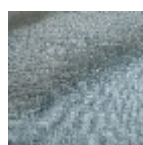
F3869021  
Nuage



F3869022  
Celeste



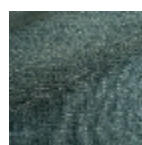
F3869023  
Orage



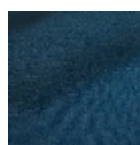
F3869024  
Azur



F3869025  
Neptune



F3869026  
Atlantique



F3869027  
Marine