

F3869025 COMPORTA

Haute performance Outdoor, la chenille COMPORTA au bel effet chiné se décline dans un large éventail de teintes naturelles et vibrantes. Elle allie solidité et souplesse pour une utilisation siège et rideau. Tissée dans les ateliers Pierre Frey (EPV) du nord de la France, cette belle chenille illustre l'expertise de la Maison dans le tissage de textiles Haute Performance, déperlants, antitache et résistants à la lumière.

F3869025 - Neptune



Laize : 137,00 cm / 53,93 inch

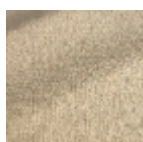
Pierre Frey

TYPE	-
UTILISATION	Siège intensif
MARTINDALE	60.000 T
COMPOSITION	100 % Acrylique
UNITÉ DE VENTE	Disponible au mètre
LAIZE	137 cm / 53,93 inch
POIDS	685 gr / ml
ENTRETIEN	
CERTIFICATIONS	CAL TB 117- Pass NFPA 260-Class 1
NOTES	<p>Haute solidité lumière, anti-moisissure, antitache, déperlant Tissu Indoor-Outdoor Made in France (EPV/Living Heritage Mill) Tissé dans les ateliers Pierre Frey du nord de la France. Entreprise du Patrimoine Vivant.</p>
INFORMATIONS	<p>Utiliser des garnissages adaptés pour une utilisation "outdoor" et penser à ranger matelas et coussins dans un endroit propre et sec quand ils ne sont pas utilisés Prévoir une confection adaptée pour renforcer les coutures</p>
LIASSE	F9979202308MINI F9979202305 F9979202308

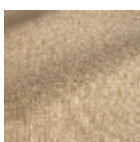
27 Couleurs



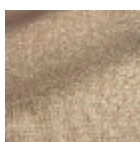
F3869001
Ivoire



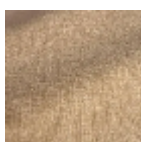
F3869002
Creme



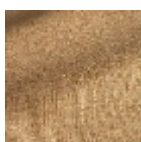
F3869003
Beige



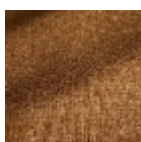
F3869004
Lin



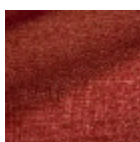
F3869005
Sable



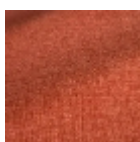
F3869006
Caramel



F3869007
Camel



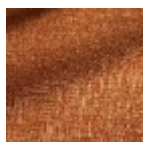
F3869008
Bordeaux



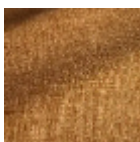
F3869009
Sanguine



F3869010
Capucine



F3869011
Bronze



F3869012
Ocre



F3869013
Miel



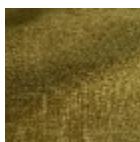
F3869014
Camomille



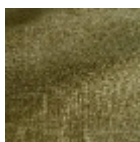
F3869015
Verveine



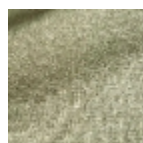
F3869016
Asperge



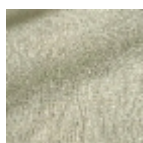
F3869017
Olive



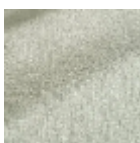
F3869018
Cactus



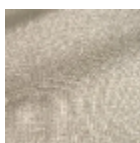
F3869019
Sauge



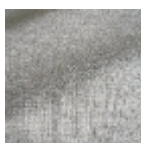
F3869020
Amande



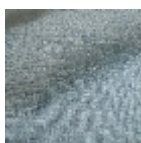
F3869021
Nuage



F3869022
Celeste



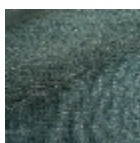
F3869023
Orage



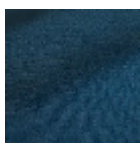
F3869024
Azur



F3869025
Neptune



F3869026
Atlantique



F3869027
Marine