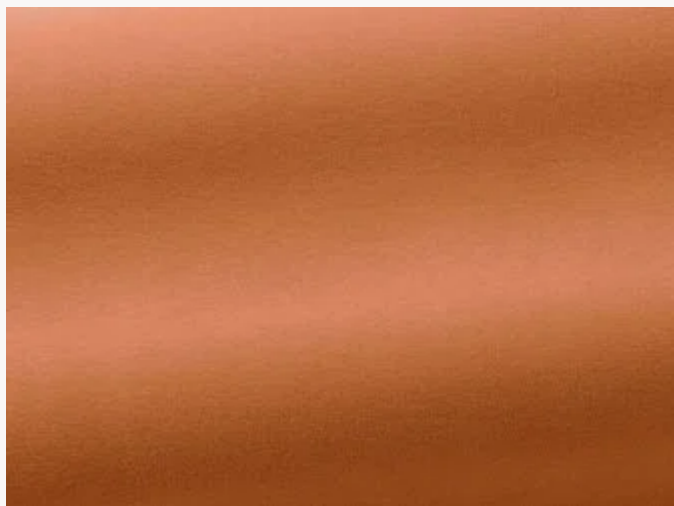


# I6576005 LUIGI

Très beau velours Trevira CS évoquant la douceur et l'élégance d'un velours de soie.

## I6576005 - Mangué



Laize : 140,00 cm / 55,11 inch

## Fadini Borghi

<b>TYPE</b>	-
<b>UTILISATION</b>	Siège intensif
<b>MARTINDALE</b>	>100.000 T
<b>COMPOSITION</b>	100 % Polyester Trevira CS
<b>UNITÉ DE VENTE</b>	Disponible au mètre
<b>LAIZE</b>	140 cm / 55,11 inch
<b>POIDS</b>	967 gr / ml
<b>ENTRETIEN</b>	

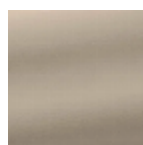
---

<b>CERTIFICATIONS</b>	BS5852 Cigarette & match test CAL TB 117- Pass Non feu M1 CLASSE UNO NFPA 260-Class 1
-----------------------	---

---

<b>NOTES</b>	Non feu Embossed fabrics
--------------	-----------------------------

# 14 Couleurs



I6576001  
Quartz



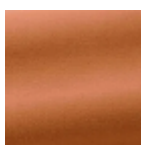
I6576002  
Galet



I6576003  
Mika



I6576004  
Absinthe



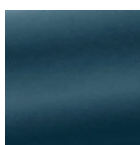
I6576005  
Mangue



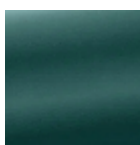
I6576008  
Poudre



I6576010  
Lune



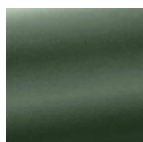
I6576011  
Canard



I6576012  
Céladon



I6576013  
Fontaine



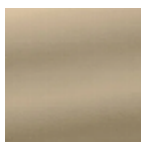
I6576014  
Forêt



I6576015  
Gris



I6576016  
Zan



I6576017  
Nacre