

I6576016 LUIGI


Très beau velours Trevira CS évoquant la douceur et l'élégance d'un velours de soie.

I6576016 - Zan



Laize : 140,00 cm / 55,11 inch

Fadini Borghi

| | |
|-----------------------|---|
| TYPE | - |
| UTILISATION | Siège intensif |
| MARTINDALE | >100.000 T |
| COMPOSITION | 100 % Polyester Trevira CS |
| UNITÉ DE VENTE | Disponible au mètre |
| LAIZE | 140 cm / 55,11 inch |
| POIDS | 967 gr / ml |
| ENTRETIEN |  |

| | |
|-----------------------|---|
| CERTIFICATIONS | BS5852 Cigarette & match test CAL TB 117- Pass Non feu M1 CLASSE UNO NFPA 260-Class 1 |
|-----------------------|---|

| | |
|--------------|-----------------------------|
| NOTES | Non feu Embossed fabrics |
|--------------|-----------------------------|

11 Couleurs



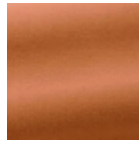
I6576002
Galet



I6576003
Mika



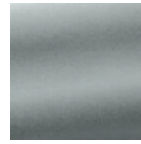
I6576004
Absinthe



I6576005
Mangué



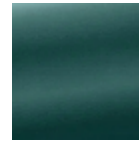
I6576008
Poudre



I6576010
Lune



I6576011
Canard



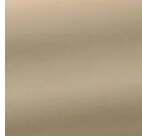
I6576012
Céladon



I6576013
Fontaine



I6576016
Zan



I6576017
Nacre