

# I6601002 TILDA

Faux-uni aux multiples reliefs évoquant la roche brute.

## I6601002 - Gold



Laize : 134,00 cm / 52,75 inch

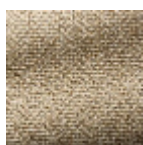
## Fadini Borghi

<b>PERFORMANCE</b>	haute résistance
<b>TYPE</b>	-
<b>UTILISATION</b>	Siège normal
<b>MARTINDALE</b>	40.000 T
<b>COMPOSITION</b>	52 % Viscose - 27 % Polyester - 15 % Coton - 6 % Lin
<b>UNITÉ DE VENTE</b>	Disponible au mètre
<b>LAIZE</b>	134 cm / 52,75 inch
<b>RACCORD</b>	Raccord libre
<b>POIDS</b>	884 gr / ml
<b>ENTRETIEN</b>	
<b>CERTIFICATIONS</b>	BS5852 Cigarette & match test NFPA 260-Class 1
<b>NOTES</b>	Tissé dans les ateliers Pierre Frey du nord de la France. Entreprise du Patrimoine Vivant.
<b>INFORMATIONS</b>	Tissage irrégulier

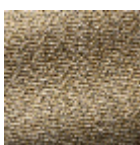
## 8 Couleurs



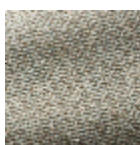
I6601001  
Silver



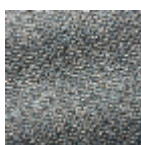
I6601002  
Gold



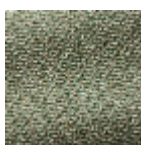
I6601003  
Mordoré



I6601004  
Opaline



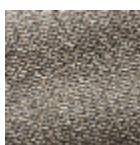
I6601005  
Saphir



I6601006  
Emeraude



I6601007  
Nymphe



I6601009  
Graphite