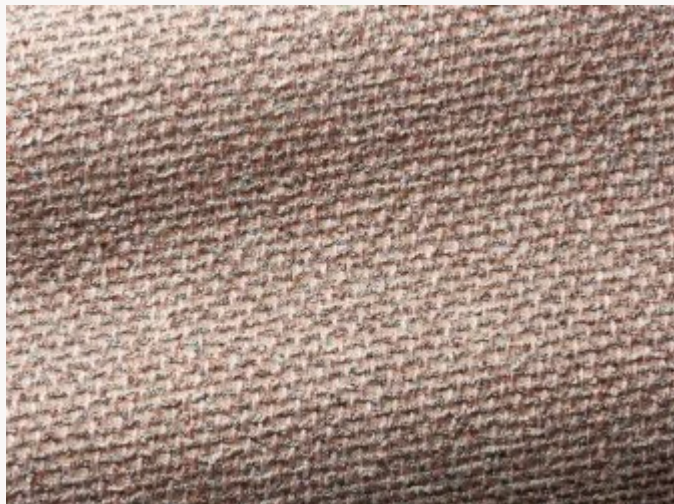


I6601007 TILDA

Faux-uni aux multiples reliefs évoquant la roche brute.

I6601007 - Nymphe



Laize : 134,00 cm / 52,75 inch

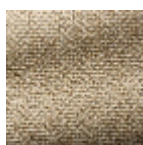
Fadini Borghi

PERFORMANCE	haute résistance
TYPE	-
UTILISATION	Siège normal
MARTINDALE	40.000 T
COMPOSITION	52 % Viscose - 27 % Polyester - 15 % Coton - 6 % Lin
UNITÉ DE VENTE	Disponible au mètre
LAIZE	134 cm / 52,75 inch
RACCORD	Raccord libre
POIDS	884 gr / ml
ENTRETIEN	
CERTIFICATIONS	BS5852 Cigarette & match test NFPA 260-Class 1
NOTES	Tissé dans les ateliers Pierre Frey du nord de la France. Entreprise du Patrimoine Vivant.
INFORMATIONS	Tissage irrégulier

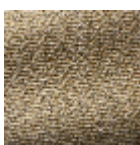
8 Couleurs



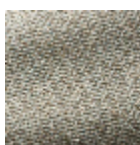
I6601001
Silver



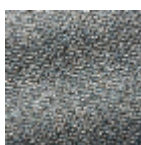
I6601002
Gold



I6601003
Mordoré



I6601004
Opaline



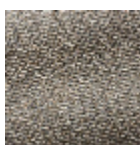
I6601005
Saphir



I6601006
Emeraude



I6601007
Nymphe



I6601009
Graphite