

I6601009 TILDA

Faux-uni aux multiples reliefs évoquant la roche brute.

I6601009 - Graphite



Laize : 134,00 cm / 52,75 inch

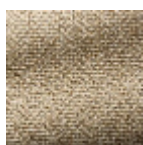
Fadini Borghi

| | |
|-----------------------|--|
| PERFORMANCE | haute résistance |
| TYPE | - |
| UTILISATION | Siège normal |
| MARTINDALE | 40.000 T |
| COMPOSITION | 52 % Viscose - 27 % Polyester - 15 % Coton - 6 % Lin |
| UNITÉ DE VENTE | Disponible au mètre |
| LAIZE | 134 cm / 52,75 inch |
| RACCORD | Raccord libre |
| POIDS | 884 gr / ml |
| ENTRETIEN | |
| CERTIFICATIONS | BS5852 Cigarette & match test NFPA 260-Class 1 |
| NOTES | Tissé dans les ateliers Pierre Frey du nord de la France. Entreprise du Patrimoine Vivant. |
| INFORMATIONS | Tissage irrégulier |

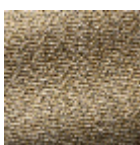
8 Couleurs



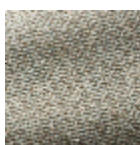
I6601001
Silver



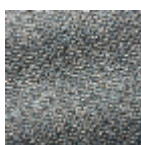
I6601002
Gold



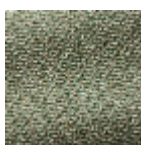
I6601003
Mordoré



I6601004
Opaline



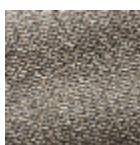
I6601005
Saphir



I6601006
Emeraude



I6601007
Nymphe



I6601009
Graphite